



Presbytery of Coastal Carolina

"Cultivating Generosity"

807 West King Street • Elizabethtown, NC 28337-9587

VOICE: 910-862-8300 • FAX: 910-862-3524

www.presbycc.org



February 19, 2016

Greetings: Teaching Elders, Commissioned Ruling Elders, Clerks of Sessions, Members of Presbytery Mission Cabinet & Others

The 106th Stated Meeting of Presbytery will held **March 5, 2016** at **Shallotte Presbyterian Church**, 5070 South Main St., Shallotte North Carolina 28459. Directions are included in the Advance Packet.

The attached Advance Packet includes the meeting agenda, detailed reports concerning the various items of business to be conducted at this meeting, and several items of information. **By going to the Presbytery's website (www.presbycc.org)**, you will find *Guidelines for a First Time Elder Commissioner*. *To be excused from the meeting send an email to jankrause@presbycc.org or call the Presbytery office at 910-862-8300.*

Please note that your computer will enable you **NOT** to have to print the whole Presbytery packet attached here. **You may choose to print just the pages you need/want for the meeting at www.presbycc.org/**

I urge you to study the agenda in advance and suggest you arrive early since *we plan to dismiss at 1:00 PM. Lunch will then be served.*

CONCERNING REGISTRATION:

At each registration table there will be notebooks for you to print your name. There will be three registration groupings: **(1) Pastors, (2) CRE's & others eligible to vote and (3) Church elder commissioners who will register under their church name.** Voting commissioners and minister members will be given a blue neck wallet. **The blue neck wallets are to be returned in collection bins at the conclusion of the meeting.** (Be aware that all "First Presbyterian" churches will be listed under "F", not under the city name.) There will also be a **fourth line for Church Educators and visitors.** Visitors will receive regular name tags.

Lunches will be available for persons making advance reservations. Cost is \$10, payable at the door. No money will be accepted prior to event. Reservations are due by Thursday, February 25, 2016 and can be made online at www.presbycc.org

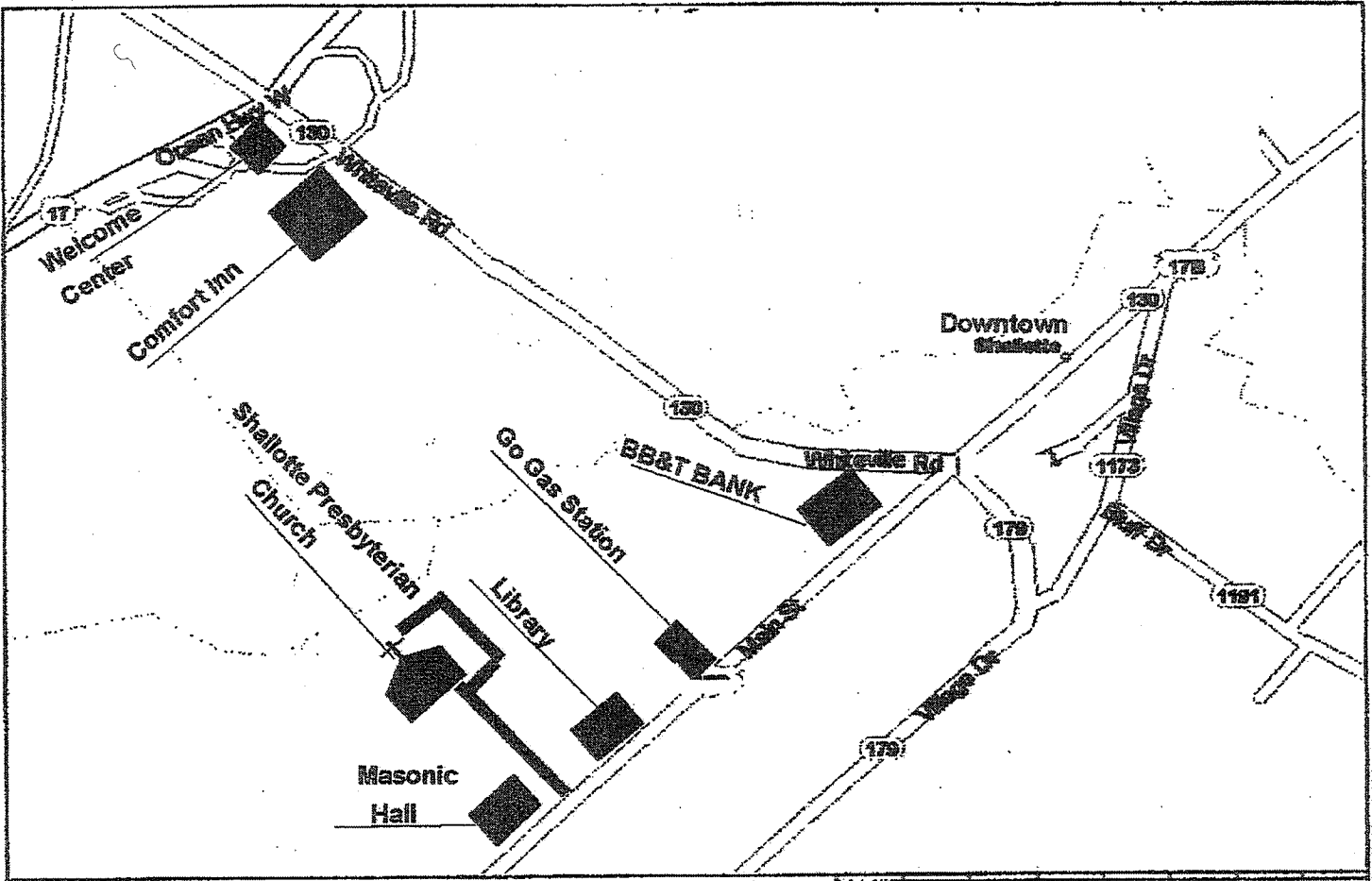
Childcare can be provided at Shallotte Presbyterian Church with **advance notice**. Contact Presbytery Office with the request to include ages of children (910-862-8300, ext. 202 or jankrause@presbycc.org) no later than **12:00 noon Friday, February 26, 2016**. Be sure to bring a snack and a lunch for children.

In the unlikely event of severe weather, we will announce any postponement of the meeting on Presbytery's web site (www.presbycc.org), in the voice mail message which answers incoming telephone calls (910-862-8300), and/or via Presbytery's email networks. If there is any question, check the web site or call the office number.

Moderator Sue Lowery will call the meeting to order promptly at 9:30 AM.

William T. Reinhold
General Presbyter & Stated Clerk

Shallotte Presbyterian Church
5070 South Main Street
Shallotte, NC 28470
910-754-6929



From Whiteville follow route 130 East to intersection with US 17 business south (Main street) in Shallotte. Turn right and go approximately .03 tenths of a mile, turn right between Library and Masonic Hall.

From Wilmington follow route 17 South to second Shallotte exit (highway 130). Follow 130 east to intersection with US 17 business South (Main street). Turn right and go approximately .03 tenths of a mile, turn right between Library and Masonic Hall.

From the South follow route 17 North to second Shallotte exit (highway 130). Follow 130 East to intersection with US 17 business South (Main Street) Turn right and go approximately .03 tenths of a mile turn right between Library and Masonic Hall.

Proposed Agenda
Presbytery of Coastal Carolina
One Hundred and Sixth Stated Meeting
Saturday, March 5, 2016
Shallotte Presbyterian Church

Elder Sue Lowery, Presbytery Moderator
Rev. Dr. Hazel Wilson, Presbytery Vice-Moderator

8:45 AM	Registration Begins	
9:30 AM	Call to Order and Opening Prayer	Ruling Elder Sue Lowery, Moderator
9:35 AM	Declaration of Quorum	Rev. Bill Reinhold, Stated Clerk
9:37 AM	Welcome	Rev. John Causey
9:40 AM	Appointments of Standing Committees	Elder Sue Lowery, Moderator
	Attendance, Bills & Overtures, Thanks, Temporary Clerks	
9:45 AM	Morning Worship	Rev. Bill Reinhold, Preacher
11:00 AM	Adoption of Agenda [3]	Rev. Bill Goodnight
11:05 AM	Stated Clerk's Report [4]	Rev. Bill Reinhold, Stated Clerk
	A. Recognition of first-time elders and visitors, seating of corresponding members	
	B. Reception of any New Business (must be in writing) *	
	C. Correspondence Received	
	D. Action Items:	
	1. Monroe Camp and Retreat Center – Board of Trustees Membership	
	2. Administrative Commissions – Congregations not following dismissal process	
11:25 AM	Mission Cabinet [5-8]	Rev. Bill Goodnight
	A. Monroe Camp and Retreat Center – Lease Agreement for Cell Tower	
	B. Election of Launch Teams and Temporary Members of Mission Cabinet	
	C. Dates of Presbytery Meetings for 2017	
	D. Report on 2016 Finances	
11:45 AM	Nominations and Volunteer Development [9-10]	CRE Richard Wurtzel
11:50 AM	Committee on Preparation for Ministry [11-12]	Rev. Philip Gladden
	A. Examination for Candidacy: Dr. Scott Cameron, Highland Church	
	B. Revision of Action on Mr. Brett Johnson	
12:10 PM	Commission on Ministry [13-16]	Ruling Elder Jay Bender
	A. Reception of New Members (Bardeen, Baylee, and Young)	
	B. Other Action Items (Congregational Requests for Dismissal)	
	C. Information Items from Community Commissions on Ministry	
12:50 PM	Announcement of Board of Pensions Seminars [17] and other reports [18-24]	
12:55 PM	Closing Prayer and Blessing for Lunch	Rev. Dr. Hazel Wilson, Vice-Moderator
1:00 PM	Lunch	

***All introduction of new business must be in *writing* and placed in the hands of the Stated Clerk at the *outset of the meeting*.**

Presbytery of Coastal Carolina
Stated Clerk's Report to Mission Cabinet
March 5, 2016

Correspondence – Monroe Camp and Retreat Center requests that the Presbytery authorize their Board of Trustees to modify their Articles of Incorporation so that instead of the Presbytery nominating and electing 4 of the 12 elected voting members the Board of Trustees shall elect all 12 of the voting members of the Board; and instead of 3 ex-officio voting members (Chair of the Standing Committee on Finance and Property, the Chair of the Christian Education Committee, and the General Presbyter) the Board of Trustees shall have no ex-officio voting members; and instead of 2 non-voting, ex-officio members (Director of Monroe Camp and Retreat Center and the Moderator of the Presbytery of Coastal Carolina) only the Director shall be a non-voting, ex-officio member.
I move the approval of these changes to Monroe's Articles of Incorporation.

Ecumenical Relations – None

Updates on Congregations Considering Seeking Dismissal or Dissolution

1. Bensalem – Congregational gathering voted unanimously on January 31, 2016, to request dismissal to EPC on the terms agreed to by the session and Presbytery's negotiating team.
2. Bethel/Raeford – A congregational gathering has been called for February 28, 2016, to vote on requesting dismissal to EPC based on terms worked out between session and Presbytery's negotiating team.
3. Bowden Community – The Administrative Commission is waiting for Bowden Church to complete legal work necessary for their dissolution and the disposition of their property.
4. Chadbourn – no further conversation about their desire for discernment.
5. Cypress – pastoral team continues to work with congregation in its discernment.
6. Flat Branch – Presbytery voted to dismiss congregation to ECO in October. Not all of the terms of dismissal have been completed yet. **I move an extension of 45 days to complete the process.**
7. Harmony – no response to communications with session.
8. Holly Grove – no response to communications with session.
9. Pineland – Congregation gathering voted on February 17, 2016, to request dismissal to the EPC on the terms agreed to between the session and Presbytery's negotiating team.
10. Wayside – a meeting with a representative of EPC will be held on February 28 with a member of this Presbytery's pastoral team attending.

I move that the Presbytery authorize the Commission on Ministry to appoint Administrative Commissions to deal with the Harmony and Holly Grove congregations since they are not following the approved Discernment Policy for congregations considering requesting dismissal to another Reformed denomination.

Future Presbytery Meetings – Invitations Received

1. October 8, 2016 – need invitation
2. March 25, 2017 – First Church – Morehead City
3. October 14, 2017 – need invitation

Boundary Training and Background Checks (SafeGatherings) and Ethics Policy

The Commission on Ministry is working with the half-dozen pastors who have not yet completed their Boundary Training or submitted signature pages acknowledging the Presbytery's Ethic Policy.

Presbytery of Coastal Carolina
Mission Cabinet Report
March 5, 2016

Action Items

1. **Monroe Camp and Retreat Center – Move that the Presbytery of Coastal Carolina, Inc. enter into a lease agreement with Electronic Communications Services, Inc. (ECS, Inc.) for a period of 25 years allowing ECS to erect and operate a communications tower on parcel of the property currently leased by Monroe Camp and Retreat Center in Laurel Hill.**

Information: The compensation for this lease is for ECS to provide to Monroe Camp and Retreat Center 2 internet connections, Wi-Fi, 2 telephone services including 200 minutes of long distance monthly and two monitored security systems; all described in the lease agreement. In the event that Monroe Camp ceases operations there is a clause in the lease to revert to cash payment to the Presbytery of Coastal Carolina, Inc. At the end of the lease, ECS is required to remove the equipment, if the lease is not renewed. The Board of Monroe Camp and Retreat Center, Inc. affirms this lease and desires its approval by the Presbytery. The lease agreement was prepared by an attorney associated with Monroe Camp and Retreat Center and is available for review by request. The Finance and Property Committee has also reviewed this lease and recommends it for adoption.

2. **Members of Launch Teams – That the following persons be elected as members of the Launch Team (temporary Steering Teams) for each of the three Missional Communities:**

- a. West Community

Teaching Elders: John Taylor (Jonesboro), Ron Stoker (First Sanford), Deck Guess (Laurel Hill), Katherine Taylor (Parish Assoc. Brownson) and Ruling Elders: Jean Powell (Raeford), Gracie Williams (Blandonia), Jim Smith (Laurinburg), John Wester and Susan Wester (Cape Fear Lillington).

- b. Central Community

Teaching Elders: Sally Henry (Sardis), Jim Moran (Graves Memorial), Clarence Page (Bethany and Panthersford), Cassandra Thomas (MAL) and Ruling Elders: Doris Dees (Central), Joann Cox (Clarkton), Bonnie Barr (Graves Memorial), Darrell Page (Elizabethtown) and Stan Mertz (Graves Memorial).

- c. East Community

Teaching Elders: Ann Jahnes (Southport), Pat Rabun (Little Chapel), Hank Bellomy (Beulaville), Robbie Phillips (Wildwood) and Ruling Elders; Matlynn Yeoman (Chestnut Street), Curt Simpson (Wallace), Joyce Winkler (Shallotte), and Deacon, Vance Meanor (First Wilmington).

3. **Members of Mission Cabinet – That the following persons be elected to the Presbytery Mission Cabinet until the Missional Communities can elect their representatives this summer:**

- a. West Community

Teaching Elder John Taylor and Ruling Elders Priscilla Brower and Bill Ingle

- b. Central Community

Ruling Elder Bonnie Barr and Teaching Elders Clarence Page and Sally Henry

- c. East Community

Ruling Elders Curt Simpson and Matlynn Yeoman and Teaching Elder Pat Rabun

4. **Members of the Executive Committee – That the following persons be elected to the Executive Committee of the Mission Cabinet until the Missional Communities elect their own representatives this summer:**
 - a. West Community – Ruling Elder Priscilla Brower
 - b. Central Community – Teaching Elder Clarence Page
 - c. East Community – Ruling Elder Curt Simpson
5. **Dates for 2017 Meetings of Presbytery – Move that the Presbytery of Coastal Carolina have two stated meetings in 2017 on the following dates:**
 - a. Saturday, March 25, 2017 (Ash Wednesday is on March 1st & Easter is April 16th)
 - b. Saturday, October 14, 2017

Information

1. **Presbytery Minutes** – the Mission Cabinet reviewed, corrected, and then approved the minutes of October 10, 2015 and of December 5, 2015.
2. **Missional Communities** – each Mission Coordinator has recruited a launch team to organize the first gathering of our three Missional Communities. The launch teams recruited three members each to serve on the Mission Cabinet.
3. **Core Functions of the Missional Communities** – certain, essential ministries of the Presbytery are being located in the three Missional Communities in order to bring them closer to our congregations and respond to local needs and preferences. Since this is a transitional year and the Communities are not yet organized to guide this work some committees are continuing to function during the transition: The are:
 - a. Christian Formation – the Christian Education Committee co-hosted the annual Equipping the Saints event with First Church Wilmington (The Averette Lectures). The E³ planning team is continuing to plan for this year’s fall educational event.
 - b. Congregational Vitality – The Committee for Church Revitalization and Transformation (CCRT) hosted the winter retreat on Congregational Transformation featuring Rev. Dr. Jerry Cannon of Charlotte as the presenter. He led the committee and others in attendance in planning for the future of the work of congregational vitality.
 - c. Shared Mission – Shared Ministry will be transitioning to the Missional Communities as they plan their budgets for the rest of 2016 and make requests for 2017 funding.
 - d. Sessional Review – The Sessional Review Committee will read sessional records one last time at the March 5, 2016, meeting at Shallotte. After that records will be reviewed by the three Missional Communities in a fashion that each will determine for themselves.
4. **Other Committees** – Other committees of the Presbytery are continuing to function as usual including:
 - a. African American Ministries
 - b. Bills and Overtures (yet to be organized)
 - c. Latin-Hispanic Ministries
 - d. Ministry (Commission on Ministry)
 - e. Nominations
 - f. Preparation for Ministry
 - g. Stewardship Development
 - h. Representation
 - i. Strategic Planning and Organizational Review
 - j. Permanent Judicial Commission
 - k. Response Coordinating Team

1. Self Development of People
5. **Standing Committees of Mission Cabinet** – the Finance and Property and the Personnel Standing Committees of the Mission Cabinet will continue to function as usual.
6. **Other Functions** – The work of several other committees has been moved to the Mission Cabinet. For the time being the former committees are continuing to function as the Mission Cabinet finds the best way to organize these responsibilities. These include:
 - a. Communications
 - b. Hunger Action
 - c. Mexico Partnership
 - d. New Church Development
 - e. Peacemaking
 - f. Youth Ministry and Resource CenterWith the exception of the E³ Planning Team, the Christian Education Committee has disbanded and the Mission Cabinet will oversee the work of the Resource Center and Youth Ministry.
7. **Actions Taken by Mission Cabinet** – the newly constituted Mission Cabinet took the following actions in preparation for this Presbytery meeting:
 - a. Selected Monroe Camp and Retreat Center as the recipient of the March 5th offering.
 - b. Authorized the Chair and Vice Chair of the Mission Cabinet, the Moderator and Vice Moderator of the Presbytery and the General Presbyter/Stated Clerk to prepare the docket for the March 5th Presbytery meeting.
 - c. Scheduled the Commissioning of Commissioners to the General Assembly for the March 5th meeting of the Presbytery.
 - d. Set the dates for Mission Cabinet meeting for 2015 as follows:
May 12, 2016, August 18, 2016; and September 15, 2016.
8. **Other Actions Taken by Mission Cabinet** – the newly constituted Mission Cabinet took the following actions in preparation for the Missional Community Gatherings this summer:
 - a. Authorized the three Missional Communities to Celebrate the Lord's Supper at their summer gatherings if the Launch Teams so desire.
 - b. Authorized the three Launch Teams to organize the selection of moderators, parliamentarians and recording clerks as needed for their meeting(s).
 - c. Authorized the Commission on Ministry to present for first reading the recommendations on Minimum Terms of Call at the Missional Gatherings in the summer (June) and for action to the full meeting of the Presbytery in October.
 - d. Authorized the Finance and Property Committee to present for first reading the proposed 2017-2018 Biennial Budget at the Missional Gatherings in the summer (June) and for action to the full meeting of the Presbytery in October.

**The Finance and Property Committee of Presbytery Mission Cabinet
Report to Presbytery: Action and Informational Items
March 5, 2016**

Financial Information:

1. Revenue Summary: December 31, 2015

As of December 31, 2015 the Presbytery expenses exceeded revenue by \$9,099 which was covered by reserves. All Per Capita was paid in 2015 as unpaid Per Capita was received from churches leaving the PCUSA.

Revenue and Expenses Summary:

Total Revenue	1,037,691
Expenses	1,046,790
Net Income/(Loss)	- 9,099

After amending the 2016 budget in December, we have been notified by several churches that they are decreasing Presbytery/Synod/PCUSA support by at least \$50,000 this year. We hope that we will not have to amend the budget again but will know more later in the year.

Churches are expected to support the Presbytery in addition to the PCUSA as they are entitled to operate as non-profit charitable organizations under the IRS ruling granted to the PCUSA, thus allowing their income to be non-taxable and contributions to be deductible by individuals. The Book of Order states that it is the responsibility of the Sessions to voluntarily provide financial support to the Presbytery and General Assembly; designated funds do not count as Shared Mission support. Remember, Shared Mission is what allows the Presbytery to operate as all Per Capita goes straight to GA and Synod.

We certainly want to thank the many churches that continue to provide support to the Presbytery so that we can continue with our ongoing programs and community outreach, especially now as we start to emphasize the three-community concept of working together more closely!!! Many, many thanks to all of you.....

2. Action Items: F and P requests approval of the following – refer to Mission Cabinet Action Items

a. **Move that the Presbytery of Coastal Carolina, Inc. enter into a lease agreement with Electronic Communications Services, Inc. (ECS, Inc.) for a period of 25 years allowing ECS to erect and operate a communications tower on a parcel of the property currently leased by Monroe Camp and Retreat Center in Laurel Hill.**

Information: The compensation for this lease is for ECS to provide to Monroe Camp and Retreat Center 2 internet connections, Wi-Fi, 2 telephone services including 2000 minutes of long distance monthly and two monitored security systems; all described in the lease agreement. In the event that Monroe Camp ceases operations there is a clause in the lease to revert to cash payment to the Presbytery of Coastal Carolina, Inc. At the end of the lease, ECS is required to remove the equipment, if the lease is not renewed. The Board of Monroe Camp and Retreat Center, Inc. affirms this leases and desires its approval by the Presbytery. The lease agreement we prepared by an attorney and is available for your review by request.

3. Other Informational Items:

a. Investment Report: Balance as of Feb. 16, 2016, was \$1,717,572 and on December 31, 2015 was \$1,883,610, down due to the volatility of the stock market recently.

b. Fuente de Agua Viva PC in Faison is now reimbursing the Presbytery \$500/mo. towards the salary of Eduardo Moreno, who is their pastor. The Presbytery also purchased property in Faison for a church in the amount of \$27,000 which had been approved previously.

Presbytery of Coastal Carolina
Committee on Nominations
Report to Presbytery
March 5, 2016

Action Items:

The Committee on Nominations recommends to Presbytery the approval of the following persons nominated to committees:

COM West: CRE, Bebe Briggs, Class of 2016

COM Central: Rev. Johnie Bennett, Class of 2018

Commissioners to the Synod of the Mid-Atlantic:

Franklin Arnold, RE, Class of 2018
Rev. Robbie Phillips, Class of 2018

Nomination Data Form

Presbytery of Coastal Carolina

The Committee on Nominations and Volunteer Development is responsible for finding individuals to serve on the Committees of Presbytery and as commissioners to General Assembly and Synod meetings. Appointments are normally for three year terms and all nominations must be submitted to the Committee on Nominations and Volunteer Development. Nominations must then be approved by Presbytery. If you have an interest in serving the Presbytery, please complete the information below.

Name_____ Church_____

Address_____ City_____ Zip_____

Phone (h)_____ (o)_____ (c)_____

Email_____

Areas of Interest

_____	_____	_____
_____	_____	_____

Return form to:

Committee on Nominations and Volunteer Development
Presbytery of Coastal Carolina
807 West King Street
Elizabethtown, NC 28337-9597

Or email to: jankrause@presbycc.org

Presbytery of Coastal Carolina
Committee on Preparation for Ministry
Report to Presbytery
March 5, 2016

Action Items:

1. That Inquirer, **Scott Cameron**, a student at Duke Divinity School and a member of Highland Presbyterian Church, Fayetteville, be admitted to the floor for examination with regard to his Christian faith, forms of service undertaken, and motives for seeking the ministry in order to determine his readiness to become a Candidate for ordination as a Teaching Elder in the Presbytery of Coastal Carolina.
2. That **Scott Cameron** be received and enrolled as a Candidate for ordination as a Teaching Elder.
3. That upon successful completion of the Bible Content Exam, the start date for the candidacy of Inquirer/Candidate **Brett Johnson** be October 10, 2015.

(Rationale: Brett Johnson was approved and enrolled as a Candidate for ordination as a Teaching Elder at the October 10, 2015 presbytery meeting, pending his successful completion of the Bible Content Exam in February 2016. Brett was not successful in his attempt in February and is registered to take the exam when next offered in September 2016.)

Information:

1. The full committee met on Saturday, February 13, 2016 with Inquirer Dayton Wilson and Candidate Kelly Sue Lindsay for their Annual Consultations. The committee approved continuing Dayton Wilson as an Inquirer. The committee also approved continuing Kelly Sue Lindsay as a Candidate and certified her as Ready to Receive a Call. The committee also received a written report from Candidate Eric Douglass in lieu of his being present for an annual consultation due to health problems.

Roster of Inquirers and Candidates

Inquirers

Scott Cameron, Duke Divinity School, Highland PC/Fayetteville

Alex Fischer, Union Presbyterian Seminary/Richmond, Westminster PC/
Fayetteville

Dayton Wilson, Union Presbyterian Seminary/Richmond, First PC/
Lumberton

Travis “T” Worrell, Union Presbyterian Seminary/Charlotte,
St. Andrews-Covenant PC/Wilmington

Candidates

Brett Johnson, Union Presbyterian Seminary/Charlotte, First PC/
Fayetteville

Luke Woodcock, Union Presbyterian Seminary/Richmond (graduate),
Topsail PC/Hampstead

Certified Ready to Receive a Call

Eric Douglass, Union Presbyterian Seminary/Richmond (graduate),
First PC/Sanford

Kelly Rex Lindsay, Union Presbyterian Seminary/Richmond,
Sherwood PC/Fayetteville

Tommy Thompson, Union Presbyterian Seminary/Richmond (graduate),
Ebenezer PC/Coats

Presbytery of Coastal Carolina
Full Commission on Ministry
Report to Presbytery
March 5, 2016

Action Items:

A. Reception of New Ministers (Faith and Bio Statements available on website)

1. Transfer of Rev. Jake Young of the Foothills Presbytery as Interim at Topsail
2. Transfer of Rev. Robert Bayley, HR, of the Seattle Presbytery as MAL
3. Transfer of Rev. Bob Bardeen, Plains and Peaks Presbytery as Interim at St. Andrews-Covenant

Consent Agenda Items occurring prior to December 5, 2015

A. Rev. Jake Young

1. Recommend the following terms of call of Topsail Presbyterian Church to Rev. Jake Young as Interim:

Salary	\$27,834.00
Housing Allowance	\$19,200.00
Board of Pensions	\$16,462.00
SECA	\$3,598.00
Professional Expenses Reimbursement	\$4,557.00
Moving Costs not to exceed	\$2,500.00

Additional Benefits as stated in the 2016 Minimum Terms of Call

B. Rev. Robert Bardeen

1. Recommend the following terms of call for St. Andrews-Covenant to Rev. Robert Bardeen as Interim:

Salary (includes housing allowance)	\$80,000.00
Retirement Plan Contribution – 403 (b)(9)	\$12,000.00
Supplemental Health Insurance	\$6,212.00
Short Term Disability	\$450.00
Reimbursement of Professional Expenses	\$6,000.00

Additional Benefits as stated in the 2016 Minimum Terms of Call

C. Pastoral Relationships:

1. Rev. Ray Mims, Interim, and Bethesda, 10-14-2015 through 7-13-2016
2. Rev. Jeff Mercer, SS, and Faith through 2016
3. Rev. David Sherrod, Pastor, and Barbecue beginning 1-1-16
4. Elder Tom Brown, CRE, and Bunnlevel through 12-6-16
5. Rev. David Hudson, SS, and Antioch/Red Springs & Lumber Bridge through 12-31-2016
6. Rev. Bob Johnson, SS, and Wayside through December, 2016
7. Rev. Kathryn Dudley, Interim, and Union through May, 2016
8. Rev. Jake Young, Interim, and Topsail 10-5-2015 through 10-4-2016
9. Rev. David Vanderbilt, SS, and Grove through 2016
10. Rev. Charles Love, SS, and Harper-Southerland through 2016
11. Elder Mark Houston, CRE, and Bethel/Beulaville through 2016
12. Rev. Bob Bardeen, Interim, and St. Andrews-Covenant through 2016
13. Rev. Bill Goodnight, SS, and Oak Plain and Potts Memorial through 2016
14. Rev. Aaron Doll, SS, and Bethany Wilmington and Pearsall through 2016
15. Rev. Robert Haywood, SS, and New Hope through 2016
16. Elder Leslie Kerr, CRE, and McClure through 2016
17. Rev. Kenneth Yearick, TS, and Grace through 2016
18. Elder Brett Johnson, CRE and Galatia effective 11-1-15 – 12-31-2016
19. Rev. Michael Garrett, Interim and First Fayetteville through 8-31-2016
20. Rev. Robert Dendy, SS, and First Maxton through 2016
21. Rev. Gary Borcharding, TS, and First Spring Lake through 2016
22. Rev. David Holloway, TS, and Big Rockfish through 2016
23. Rev. Arnold Walker, SS, and Second through 2016
24. Delton Farmer, TS, and College Heights through 2016
25. Joan Salmon-Campbell, TS, and College Heights through 2016
26. Gene Miller, SS, and Midway through 2016
27. George Walton, SS, and Buffalo through 2016
28. Roger Simmons, CRE, and Community through 12/31/2018
29. Archie Stevens, TS, and Priest Hill through 2016
30. David Priddy, TS, and Raven Rock and Leaflet through 2016
31. Richard Hodges, TS and Pleasant View/Laurinburg through 2018
32. Becky Raynor, CRE, and Acme through 2016
33. Richard Boyd, SS, Croatan through 2016
34. Larry Hogan, CRE, and Village through 6-30-2016
35. Robert Price, CRE, and Parkton through 12-31-2018
36. Randa Scott, CRE, and Caswell through 2016
37. Rev. Claude Gamble, SS, and Woodburn through 2016
38. Rev. Jim Johns, Interim, and Carolina Beach through 2016
39. Phillip Siebbleles, TS, and Rockfish through 2016

Dissolution of Relationships:

1. Rev. George Walton and Olivia effective 12-31-2015
2. CRE Tom Brown and Southview effective
3. Rev. Ernie Thompson and First Wilmington effective 11-15-2015
4. Rev. David McDonald and Westminster Wilmington effective 12-31-2015

Honorable Retirement:

1. Rev. George Walton effective 12-31-2015
2. Shuford White effective 1-31-2016

Moderators:

1. Rev. Charles Lee and First Wilmington
2. Elder Chris McMillian, QRE, and Bluff
3. Rev. Doug Cushing and The Bridge

Change in Status:

1. Rev. Kathy Beach from Parish Associate to Interim Associate pastor at First Wilmington

Supply List:

1. Rev. Stephen Kowalski, Advent Christian Church, with permission to administer communion
2. Martha McDowell, Cooperative Baptist

Dismissal:

1. Rev. James Shuman to the Presbytery of Scioto Valley

Appointments:

1. Creation of Committee of Inquiry for Trinity Laurinburg

Other:

1. Approve Rev. Ray Mendenhall to labor outside our bounds in the Transylvania Presbytery
2. Approve request of Mars Hill not to rotate elders due to low membership.
3. Approve request of Westminster Whiteville not to rotate elders due to low membership
4. Approve election, instruction and ordination of ruling elders at The Bridge
5. Approve Rev. Robbie Phillips and Rev. Tim Havlicek as Co-Chairs of COM East

The reports of the following commissions were found in order and they were dismissed with our thanks:

- a) Joanna Hipp was ordained at Cameron Presbyterian Church, Cameron, NC on Sunday, October 11th at 4:00 PM: Teaching Elders: Whitney Wilkinson, Ed Boyce, Jim Ewing, Ruling Elders: Cathy McRae, Teresa Page
- b) John R. Pflug, Jr. was installed as Pastor at Windermere Presbyterian Church, Wilmington, NC on Sunday October 18, 2015 at 4:30 PM: Teaching Elders: William G. Young, Nancy Gladden, David Augustus, Whitney Fauntleroy, Ruling Elders: Ron Stott, Sue Lowery, Matlynn Yeoman
- c) John Hage was installed as Pastor at Brownson Memorial Presbyterian Church on Sunday, October 11, 2015 at 4:00 PM: Teaching Elders: Ernest Thompson, Cassandra Thomas, Richard Martindale, Susan Hudson, Karen Allen, Ruling Elders: Sandra Carroll, Marvin Hage, Charles Harrison

Presbytery of Coastal Carolina
Commission on Ministry

Recommended Supply Preaching Honoraria

Minimum for any guest preacher (CRE, ordained minister, lay speaker, Presbytery staff person)

One worship service:

\$125 (this includes mileage for a preacher who travels less than 20 miles one way)

or \$100 plus mileage (for preachers who travel more than 20 miles one way)

Two worship services:

\$200 (includes mileage within 20 miles one way)

or \$175 plus mileage (more than 20 miles one way)

Mileage should be reimbursed at the current IRS rate (\$0.54 as of January 1, 2016) and added to the base amount.

All checks should include in the memo:

“honarium and mileage” (with \$ amounts if calculated separately by the church)

NOTE:

These are suggested **minimum** amounts only. Many churches offer more compensation for supply preaching. Some churches offer more to ordained ministers than to lay speakers.

Ordained ministers who are asked to perform additional services which require more time and preparation, such as celebrating communion, installing elders, or moderating a congregational meeting should receive additional compensation.

Very small churches or those with extreme budget constraints who do not plan to provide the expected minimum must negotiate with the supply preacher ahead of time.

For tax purposes, ministers are responsible for to the IRS all honoraria received and may claim mileage expenses, whether or not a church pays mileage separately, if expenses are supported by clear, detailed mileage records.

In addition, **churches who pay one individual more than \$600 in a calendar year are required by the IRS to issue a 1099 to the preacher**, who may be considered a “Contract Employee.” In such a situation, be sure to calculate mileage separately and obtain the individual’s Social Security number and mailing address for a 1099. Please consult a CPA or tax advisor for information and advice.

Recommended Travel Expenses for Moderators

Moderators of Sessions do not expect an honorarium for their service, but congregations should reimburse them for their mileage at the current IRS rate (\$0.54 as of January 1, 2016).

ATTN: Treasurers ~ Bookkeepers ~ Personnel Committees
Pastors ~ Board of Pensions Plan Members

Please plan to attend one of these presentations about upcoming changes in the Benefits structure and options for 2017.

The **2017 Benefits Plan Redesign** Presentations will offered at:

- **Tues., April 5** at Wallace Presbyterian; 12:15-2PM; Lunch will be offered at no charge but an RSVP to NancyGladden@presbycc.org is requested.
- **Wed., April 6** at Highland Presbyterian, Fayetteville; Noon-2PM; Lunch will be offered at no charge but an RSVP to SteuartLink@presbycc.org is requested.
- **Thurs., April 7** at Bethesda Presbyterian, Aberdeen; 4:00-5:30PM; refreshments will be offered. Contact is Laura Lupton.
- Presentations will be made by Helen Locklear of the Board of Pensions
- For your information the **2017 Benefits Plan Redesign** can be found now on the Board of Pensions website at www.pensions.org. Please download the **2017 Benefit Plan Redesign** document and bring a copy with you to the presentation.

Brief summery about the 2017 Benefits Plan Design

During a recent meeting of the Board of Directors of the Board of Pensions, the Board's staff presented recommendations for the **2017 Benefits Plan Redesign of the Presbyterian Church (U.S.A.)**.

- The goal of these changes is to provide one plan that keeps the covenant with installed pastors while giving flexibility and options to employing organizations and churches so they can offer benefits to other teaching elders and other employees based on their resources.
- Installed pastors will continue with the same benefits as before; churches will pay dues and *call neutrality will be restored* thereby providing medical coverage both the minister and the family.
- For other (not installed) teaching elders and other employees the new plan will provide a range of benefits and costs from which employers may select any combination of benefits, or any stand-alone benefit based on the needs of the employee.

The Timeline for these changes:

- March 3-5, 2016: The Board of Directors will vote on the 2017 Benefits Plan Redesign
- October 2016: Open enrollment for the 2017 Benefits Plan
- January 1, 2017: 2017 Benefits Plan will be implemented

The purpose of the **2017 Benefits Plan Redesign** presentations in April is to introduce to you the new benefits plan and its various components and to respond to your questions. This presentation is designed for those most familiar with benefits, i.e. Church Business Administrators, Office Managers, Personnel Committee Representatives, Treasurers, Pastors and Presbytery staff and others who are interested.

Our Vision

A Provocative Proposal of the Reality We Seek to Live Into As Coastal Carolina Presbyterians

Empowered by our large size and rich diversity we help one another to share Christ's ministry and mission in a changing world.

1. As an entire Presbytery, we bear witness to our historic Reformed faith and learn from one another how to be God's sent-out church in our own day.
2. Gathered in Three Covenant Communities, we strengthen our relationships by finding ways to partner with nearby congregations, joining in God's mission in our communities, and learning from one another how to be Christ's Spirit-filled apostles to the whole world.
3. When we gather in worship, in prayer, and in study, we awaken our own spiritual imagination and stir one another to greater congregational vitality.
4. In times of fellowship, in occasions of learning, in ministries of compassion, and in joint worship of God, our various congregations become increasingly open to the movement of the Spirit in our lives.
5. As each of us brings our gifts and skills to the table, we effectively develop the leaders that our Presbytery and our congregations need.

Presbytery of Coastal Carolina
Strategic Planning and Organizational Review Committee (SPOR)
Our Vision Through the Provocative Proposal

Overview
March 5, 2016

1. The Provocative Proposal adopted by this Presbytery at the called December 2015 meeting is the result of two years of conversations and listening sessions across the presbytery, study of results, presentations of ideas and feedback at previous meetings of the presbytery.
2. The purpose of the proposal is to create:
 - a. Greater fellowship among both pastors and congregations
 - b. Reduction of business at meetings and more time for theological conversations and learning events
 - c. Opportunity for shared mission projects when we are together and for joining with nearby congregations when we are back home
 - d. Space for new things to sprout up and grow in unexpected ways in the areas of Christian Formation, Congregational Vitality, Shared Mission, and Sessional Records Review.
3. This new direction for our Presbytery is based on the conviction that in this time of transition God is not done with the church but indeed is breathing new life and energy! The Holy Spirit guides our paths in calling women and men, lay and clergy to new ministries of love and service. In this proposal we have intentionally left open space in planning and adoption, confident that as we take time to worship and fellowship – learn and serve together God will be at work in surprisingly new ways.
4. The adopted **Proposal** changes the way we do the work of Presbytery. We will have 2 full meetings of the Presbytery a year (the minimum specified in the *Book of Order*), and one meeting of each of the three communities initially each year. The proposal gives more authority to the Committee on Ministry and even re-forms it as a Commission with power to act for the whole Presbytery in certain, carefully specified areas. The Missional Community Gatherings initially once each year may well grow to two or more depending on each Missional Communities needs. Communities will be empowered to act on pastoral relationships within the Community, focus on Congregational Vitality, support Christian Formation, and join in mission. The review of sessional records will become the communities responsibility with the hope that new ways of providing oversight to our common life will lead to cohesion, support and growth. Missional Communities will now have much greater freedom to follow local passions and opportunities as they each seek the will of God.
5. The Proposal is based upon the assumption that Presbytery staffing through the Presbytery Executive and Stated Clerk, the Mission Coordinators for each of the three communities, the Transformation Coaches, the associate for Resource Services, the Associate for Youth Ministries, and the Database specialists through the support of the Mission Cabinet are essential to the success of this new way in the Presbytery of Coastal Carolina.

6. The Mission Cabinet has been restructured as well. Its primary role is the coordination of work across the three Missional Communities as we continue to work as one Presbytery. In addition the Mission Cabinet will be responsible for the ongoing programs that span the whole Presbytery – such as Hunger, Peacemaking, New Church Development, Nominations, etc.
7. This proposal initially will be caught in the tension of the New Way. We have tried to provide enough details to create a structure that will direct us; yet which is open enough for the Holy Spirit to make manifest God's purposes among us creating new forms to carry our mission forward. The **Revised** Manual of Operations contains these changes and redefines the work of the various committees and groups of the Presbytery. The chart which follows gives a picture the organizational vision.
8. Your unanimous adoption of this Vision of this Presbytery through the new way of the Provocative Proposal recognizes that the Presbytery of Coastal Carolina, although large in geographical size is united in ministry and service to Jesus Christ. We are definitely stronger together and in this new vision before us we are in position to be supportive of one another through worship, fellowship, mission and our common stewardship together. Indeed our stewardship in time, talent and financial resource gives true meaning to our common ministry in the Presbytery of Coastal Carolina.

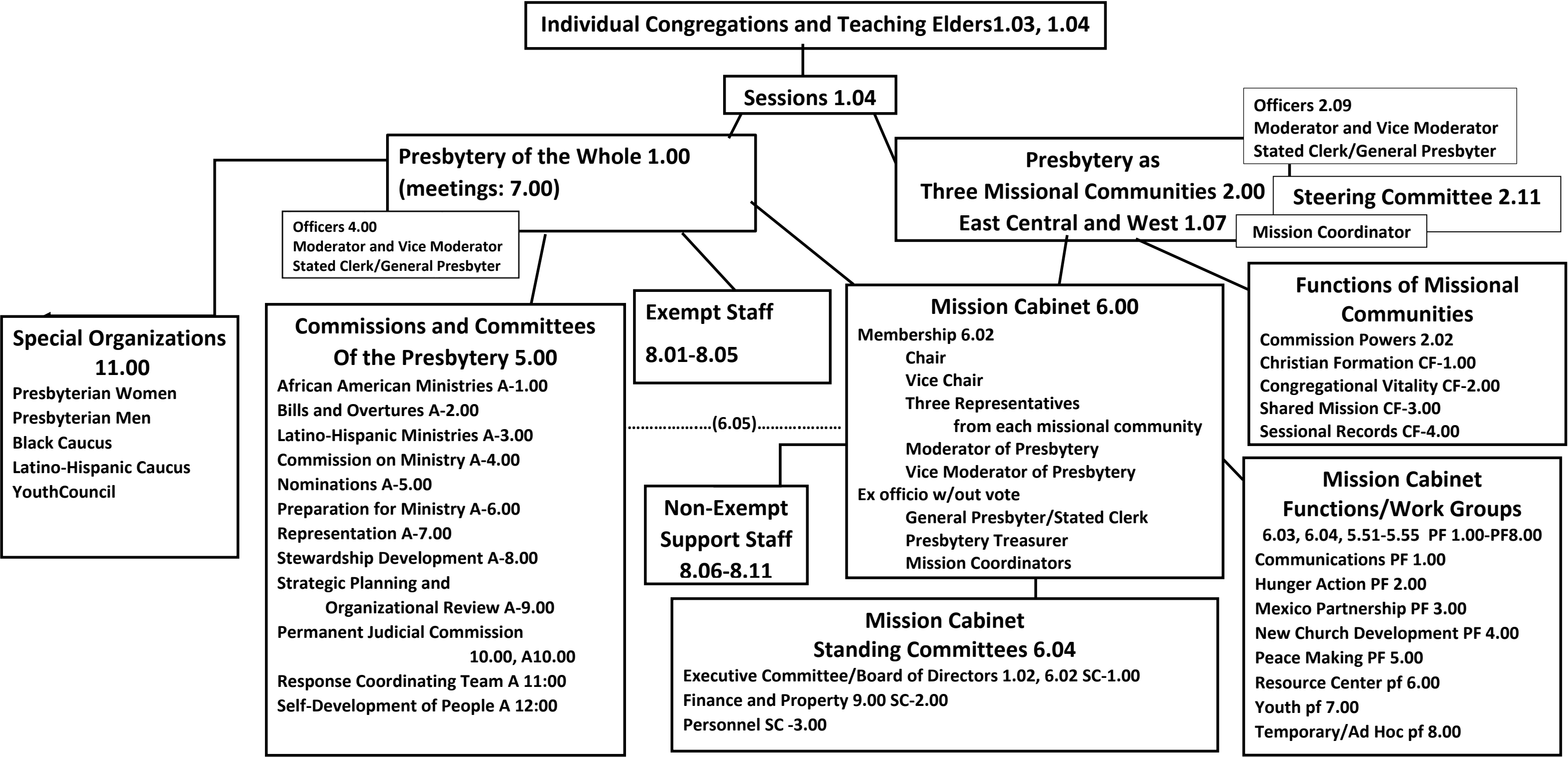
Strategic Planning Committee

THE PRESBYTERY OF COASTAL CAROLINA

Gathered in Three Missional Communities Guided by a Vision (2.10)

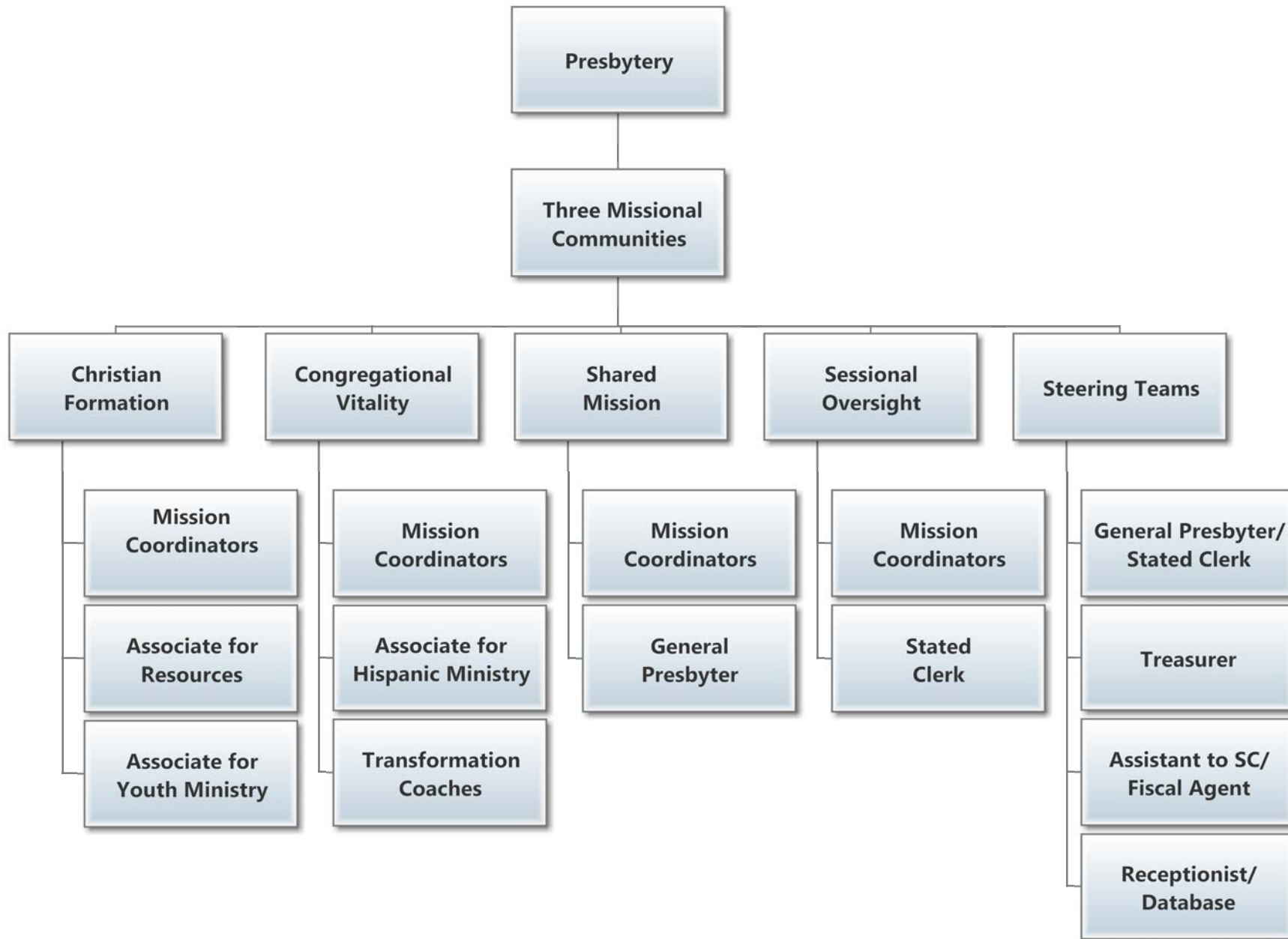
for Worship, Prayer, Study, Spiritual Awakening, Congregational Vitality, Fellowship,
and Ministries of Compassion

The Reference Numbers in this chart
refer to the
Manual of Administrative Operations
of the Presbytery of Coastal Carolina



Staffing Design for Missional Communities

Presbytery of Coastal Carolina - March 5, 2016



Presbyterian Women Report to Presbytery March 5, 2016

February 9, 2016

The Presbyterian Women of Coastal Carolina started 2016 off with a BANG!!!

Our first successful Sabbath Rest Retreat, "A State of Mind" was on January 9, 2016 at Buffalo Presbyterian Church, Sanford N.C. Our presenter Rev. Rebecca (Becky) Kahnt, Pastor of Trinity Presbyterian Church in Laurinburg conducted these special events as we came together from our busy schedules to find a more "Restful" State of Mind. Thanks to the PW of Buffalo and Betty Robinson North West Regional Communicator for hosting this event.

There are two more retreats scheduled, the first February 27, 2016 at MacPherson Presbyterian Church, Fayetteville, N.C. The second is April 23, 2016 at Carolina Beach Presbyterian Church. These will also be conducted by Rev. Rebecca (Becky) Kahnt.

A special Thanks to Jaxie Julian, facilitator of Spiritual Nurture for coordinating these retreats.

Our first time newsletter "Presbytery Coastal Carolina Women " has been printed. Thank You to Elaine Sills Facilitator of Celebration of Giving.

The twenty sixth Annual Spring Gathering on April 9, 2016 at First Presbyterian Church in Sanford North Carolina.

Priscilla Brower

Moderator Of Presbyterian Women

Coastal Carolina

The *Vibrant Congregations* Initiative

Supporting the Presbytery of Coastal Carolina's new Provocative Proposal

- ✚ Awakening spiritual imagination
- ✚ Congregational vitality
- ✚ Leadership development

Phase 2 of Missional Transformation Coaching

Fostering long-term congregational vitality

Coaching for congregations and pastors

Expanding available resources

- ✚ Monthly gatherings for pastors, interims, stated supply, and CREs
- ✚ Introductory work sessions: "Hidden Embers" and "Good to Great"
- ✚ Clergy coaching
- ✚ Spiritual direction
- ✚ Leadership readiness
- ✚ Certificate in Missional Transformation Coaching
- ✚ Two-year Communities of Practice cohorts
 - Sharing spiritual practices for elders and congregation
 - Discerning fresh congregational vision
 - Discovering congregational "deep energy"
 - Anticipating natural resistance in a constructive way

Presbytery of Coastal Carolina Transformation Coaches:

The Rev. Drs. Beverly and George Thompson, members of the Presbytery, seasoned pastors, spiritual director, seminary teachers, authors and retreat facilitators

For more information, email drbeverlythompson@gmail.com
or call 910/749-0304 or 404/731-3281

February 2016

Presbytery of Coastal Carolina
Commission on Ministry
Supplemental Report
March 5, 2016

Action Items:

- A. Reception of New Ministers** (*Faith and Biographical Sketches are attached below as Appendices A to F.*)
1. Transfer of Rev. Jake Young of the Foothills Presbytery as Interim at Topsail [A & B]
 2. Transfer of Rev. Robert Bayley, HR, of the Seattle Presbytery as MAL [C & D]
 3. Transfer of Rev. Bob Bardeen, Plains and Peaks Presbytery as Interim at St. Andrews-Covenant [E & F]
- B. Requests for Dismissal** – (*Terms of dismissal are attached below.*)
1. **Recognition of EPC** – Move that the denomination known as the Evangelical Presbyterian Church (EPC) be recognized as a Reformed Body eligible to receive congregations and ministers dismissed by this Presbytery.
 2. **Bensalem Church** – Eagle Springs
 - a. Move that the Bensalem Church be dismissed with its property to the Presbytery of the Mid-Atlantic of the Evangelical Presbyterian Church according to terms of the agreement reaching with the session on November 9, 2015, and approved unanimously by a gathering of the congregation held on January 31, 2016. These terms are attached below as Appendix G.
 - b. Move that the Rev. Dr. Mark Carver be dismissed to the Presbytery of the Mid-Atlantic of the Evangelical Presbyterian Church at the same time as the Bensalem congregation.
 3. **Bethel Church** – Raeford

Move that the Bethel-Raeford Church be dismissed with its property to the Presbytery of the Mid-Atlantic of the Evangelical Presbyterian Church according to terms of the agreement reaching with the session on February 11, 2016, and approved by a vote of 34 to 1 in favor at a gathering of the congregation held on February 28, 2016. These terms are attached below as Appendix H.

(Note: the current pastor of the Bethel-Raeford congregation is not a member of the Presbytery of Coastal Carolina.)
 4. **Pineland Church** – Jacksonville

Move that the Pineland Church be dismissed with its property to the Presbytery of the Mid-Atlantic of the Evangelical Presbyterian Church according to terms of the agreement reaching with the session on February 2, 2016, and approved unanimously by a gathering of the congregation held on February 19, 2016. These terms are attached below as Appendix I.

(Note: the Pineland Church does not have an installed pastor at this time.)

Information Items:

Reports of Commissions:

The report of the following commission was found in order and it was dismissed with our thanks:

- d. **The Bridge Church**, Leland. The congregation was chartered and the initial members of the session were ordained and/or installed by Teaching Elders Jerry Bron, Sally Henry, Robert Lapp, William Reinhold, and Ruling Elders Jay Bender and Bruce Gibson.

Appendix A

STATEMENT OF FAITH

Jake A. Young

May 2015

I believe in one God with a triune nature:

God the parent created the universe and everything in it;
all was created good;
humans were created with the rest of the universe, but with the special roles of
being in conscious relationship with God
and stewards of creation;
God did not create evil, nor did it exist before God's creation;
however, evil emerged as an active force in creation
and is purveyed by humans who, by willful actions and neglectful inactions,
commit sins against God, one another, and creation.

Jesus Christ is God in human form;
fully human, fully divine;
born and raised Jewish in ancient Palestine;
Jesus proclaimed God's Kingdom:
healing the sick,
casting out demons,
teaching the masses,
befriending the socially ostracized,
and rebuking hypocritical religious leaders, oppressive government, and
exploitative economic practices;
because of his ministry, Jesus was unjustly condemned to die on a cross;
but God raised Jesus on the third day after his death, thereby
conquering sin and evil,
providing means for all humans to be forgiven and come to know and be in proper
relationship to God and creation once again.

The Holy Spirit is the messenger and presence of God sent from the Creator as promised
by Christ;
present at creation and with the prophets of old, the Holy Spirit is with us now:
binding believers in Christ together as the Church,
where we symbolize Christ's saving power and our commitment in baptism
and remember and celebrate Christ's sacrifice and victory through the Lord's
supper,
inspiring Scripture as witness to the gospel of Christ and instruction for the
Church,
and empowering Christians to
live lives apart from sin,
proclaim the gospel of Jesus Christ,
and exhibit the Kingdom of God in the fallen world in which we live until
Christ comes again.

Appendix B

BIOGRAPHICAL STATEMENT:

Jake Adam Young

September 2015

Originally from Hampton, Virginia, I currently reside in Murrells Inlet, South Carolina, where I work as a U.S. Coast Guard licensed fishing charter Captain. I am a Minister member of Foothills Presbytery (Upstate South Carolina), where I served as Pastor at North Anderson church for over seven years.

In 1995, I began pursuing a sense of calling to ministry while my spouse and I were living in St. Louis, Missouri and attending Second Presbyterian Church. I was a graduate student in anthropology at the time (M.A., Washington University '95). We moved to Columbia, Missouri, later that year where my spouse undertook her three year medical residency training program. I worked as a medical research assistant during that time. I also used those years to come under care of Missouri Union Presbytery's Committee on Preparation for Ministry. My sons, Joseph (19) and Benjamin (17) were born in Columbia and baptized by Rim Massey at Trinity Presbyterian Church.

In 1998, we moved to Chicago and I began attending McCormick Theological Seminary. I had many great experiences during my theological training including an internship with an active, loving church and a gifted, generous mentor (Yorkfield Presbyterian Church in Elmhurst, Illinois) and opportunities to serve on Student Session, the Board of Trustees, and as event planner for the Seminary's fall retreats.

I graduated seminary and was ordained in 2001, accepting a call to be Associate Pastor at First Presbyterian Church, Springfield, Illinois in the Presbytery of Great Rivers. This was a generalist Associate position and I worked closely with the Head of Staff, Gordon McLean (retired), learning a great deal about many aspects of ministry in a 500 member, downtown church. The leadership at First Presbyterian was very supportive of their staff participating in the work of more inclusive governing bodies. Therefore, I became active in Presbytery and served as the Chair of one of four Regional Commissions on Ministry. Great Rivers is a geographically large presbytery and the Committee on Ministry formed the standing Commissions to facilitate meeting its many responsibilities. I was honored to serve and gained valuable experience working with the 38 church's in my region during those years.

In 2004, I met the Pastoral Nominating Committee for North Anderson Community Church, Presbyterian (South Carolina) at General Assembly in Richmond. I accepted the call to be their pastor and moved to Anderson with my family in November of that year. I served North Anderson with joy and energy for seven and a half years before resigning at the end of April, 2012. As a member of Foothills Presbytery, my service includes being a member and chair of the Inspiration and Support team of COM, being a member of an Administrative Commission for a church in Greenville that was undergoing a period of transition, and other forms of connectional service.

My wife and I separated in 2013 after twenty years of marriage. The divorce was final in April of 2014.

The last three years have afforded me the rare opportunity to pursue some longstanding interests and undertake an intentional period of vocational discernment. First, I began a business with my father similar to the one he owned and operated with his father for many years before he became a missionary. We manufactured and installed custom made canvas products. I then earned my USCG Captain's license and have worked for two years as a fishing guide in Murrells Inlet and a tugboat engineer in Tampa. While I have called the Murrells Inlet area home, I have regularly attended Trinity Presbyterian Church in Surfside and made myself available in service to this church and New Harmony Presbytery wherever possible.

Today, following significant discernment and prayer, as well as the counsel of friends and colleagues, I look forward to serving Topsail Presbyterian Church as Interim Pastor during this important transitional period in their life as a congregation of the Presbytery of Coastal Carolina.

Appendix C

Robert Bayley
Statement of Faith

My core convictions are deeply but warmly held, their very imbedded nature causing me to be able to listen to and dialogue with those who would take exception to them.

GOD: One Creator God has been revealed to us as Father, Son and Holy Spirit.

JESUS: God incarnate, he lived, died on the cross, conquered death, rose again, ascended into heaven and poured out the Holy Spirit, through whom Jesus is alive in the world. A personal, life-changing relationship with Jesus Christ through the work of the Holy Spirit is a necessity, not an option, for eternal salvation.

THE HOLY SPIRIT: The Holy Spirit brings us to Christ, opens the Bible to us, changes our lives in an ongoing way, and gifts and empowers us for continuing the ministry of Jesus.

THE BIBLE: The mystery of inspiration and the complexities of transmission notwithstanding, the Bible is the Word of God into which I have leaned with the weight of my existence, and found it trustworthy in my own life as well in a wide range of ministry settings.

THE CHURCH: Ministry through the renewal movement in dozens of denominations in the US and overseas has caused my ecclesiology to evolve. I see the church as being made up of every individual who knows and trusts Jesus Christ as Lord and Savior.

EVANGELISM, MISSIONS AND SOCIAL WITNESS: These expressions of the ministry of Jesus are intended by him to be initiated and empowered by the Holy Spirit to the end that individuals are brought into a life-changing relationship with him as Lord and Savior.

HUMAN SEXUALITY AND MARRIAGE: The Triune God created humans in two distinct yet overlapping expressions as male and female, to compliment and complete each other in marriage, and in non-sexually intimate social interaction. Broken by the fall, this Imago Dei is expressed in many nuanced ways from exclusively heterosexual to exclusively homosexual. The incarnation of the Godhead in a fully sexual human body in Jesus Christ, taken to the cross, opens the way for a healing of sexual perception and identity. We have much work to do to discern a fair, balanced and hopeful ministry to broken human sexuality.

TIME: I take at face value the Genesis account of the beginning of time, and believe deeply in the promised second coming of Christ at the end of time, but have focused on the present where people are seeking to decipher the meaning and purpose of their lives in the light of the Gospel. - Finally, I do what I do because I am deeply convinced that when we get to the end of the journey we will not be disappointed, but will be transitioned seamlessly into the eternal presence of Jesus Christ. "To him who is able to keep you from falling and to present you before his glorious presence without fault and with great joy - to the only God our Savior be glory, majesty, power and authority, through Jesus Christ our Lord, before all ages, now and forevermore! Amen." Jude 24-25

Appendix D

Robert Bayley Biographical Sketch

I was born and raised a Presbyterian in Los Angeles, baptized in First Presbyterian Church, El Monte, and confirmed in St. James Presbyterian Church in the Tarzana section of Los Angeles.

While my parents were not active churchgoers, I always had an interest in it, and in my teenage years sang in the choir, taught VBS, was active in the Westminster Fellowship youth group and our church-sponsored Boy Scout troop, receiving the God and Country award.

I also developed an increasingly intense spiritual curiosity and hunger, and during those same teenage years studied with a variety of cults and the occult. By my junior year of high school I had an eclectic world view and was thoroughly confused. During these years I remained very active in our Presbyterian church.

The summer before my senior year of high school my grandmother invited me to stay with her for a week. In the evenings we attended special meetings in her Pilgrim Holiness church, and on a Friday night in July, 1969 I heard a simple gospel message that turned my life upside down. I went forward to accept this Christ I did not understand and did not know I was seeking. When I got up from that time of prayer and being prayed for, I knew my life had been radically changed. From that day to this, 56 years later, there has never been a time when I have not been aware of Jesus Christ in my life. As a sidebar note, that same evening all the confusing and false teachings I had studied and embraced left me, never to return.

Seven months later I had an equally life-changing experience and encounter with the Holy Spirit in a Pentecostal meeting causing me to determine to go to a Christian college upon high school graduation. That fall I entered Southern California College, now Vanguard University, an Assemblies of God school. During my time there I spent a semester and a summer as an intern on the Colorado River Indian Reservation, and received two undergraduate degrees. I began preaching at age 18 in Indian churches across Arizona, and subsequently during the rest of my college years preached 30-50 times a year in churches across southern California.

My wife and I were married in 1966, and in 1967 we moved to an isolated Tlingit Indian village on Kupreanof Island off the coast of Alaska, where we served as school teachers. We then moved to Anchorage where I taught school and preached in area churches.

We moved to Princeton for seminary in 1970, and the journey through a number of churches from that day to this is found on my PIF. We moved more than I would have liked but some moves were due to health and educational reasons.

My wife is a native of Switzerland and a graduate of Alaska Pacific University, New York Theological Seminary in New York City, and the Blanton-Peale Graduate Institute of the Institutes of Religion and Health in New York City. She is ordained with the Disciples of Christ. She has been a state licensed professional counselor (LPC) for years until retirement.

We have three children - in Portland, Oregon, Chicago and Wilmington, NC. We have two grandchildren, one in Chicago and one in Wilmington.

My wife and I enjoy reading, going to movies and classical music concerts, and I also enjoy baseball, soccer and basketball games. All of us – my wife and I, our children and our grandchildren, are dual US/Swiss citizens.

We are back in Wilmington to be with our daughter and granddaughter who now live with us.

Appendix E

Robert Bardeen, Statement Of Faith

I believe in the living God - God the Father, God the Son, and God the Holy Spirit - eternal and everlasting. Creator of the heavens and the earth, Maker of visible and invisible, Sustainer of all that is, and Ruler of all that will be, God the Father is worthy of our worship and praise. We honor God alone.

I believe Jesus, the only Son of God, is the Lord of all. Made incarnate by the power of the Holy Spirit through the Virgin Mary, Jesus is both fully God and fully human. He offered his life, by God's will, to be the perfect sacrifice on behalf of all humans, throughout all time. His life, death, resurrection, and ascension offer hope to all humanity. Christ now sits as our High Priest, advocating to the Father on our behalf. We anticipate the day he will return again.

I believe in the Holy Spirit, who invites, guides, comforts, convicts, and transforms those who yield, by the grace of God. The Holy Spirit empowers all who believe and desires for us to use the gifts provided.

I believe all are sinners. All fall short of what God requires. It is only through a relationship with Jesus Christ that we have salvation and redemption. God, who is good, sees the good in us - calling us the salt of the earth and the light of the world, and desires good to reign instead of sin.

I believe in the gathering of all who receive Christ as Lord and are united together as Christ's Body, the church - of which Jesus is the head. We come together to worship as an expression of our love for the Savior; we fellowship together, we pray with obedience, study scripture, and serve with heart and soul. The church is entrusted with the task of being the hands of Christ - reaching out to the lost, the lonely, and the forsaken. Through compassion and sacrifice, we worship the Lord with true fellowship and devotion. We celebrate life through the remembrance of the two sacraments given to the church, the Lord's Supper and Baptism, signs of God's covenant relationship and redeeming love. God claims us in the waters of Baptism, and feeds us with the bread of life and the cup of salvation. We are united with Christ's dying and rising, and by grace, we know God's promises.

I believe the scriptures of the Old and New Testaments were given to us by God. They are divinely inspired and wholly trustworthy as the authority in all matters of faith and practice. The confessions and creeds of the church give witness to scripture expressed in historical situations - and serve to guide us even today.

I believe the community of believers has mission to do in the world and cannot do so without the transforming power of the God's grace. Grace is truly amazing: through grace we are justified, we are saved, and we are held together. And through grace we can love because we have been loved first by God through Christ on the cross.

Appendix F

Robert Bardeen, Biographical Sketch

I was born in Pasadena, CA, baptized at St. Andrews Presbyterian, Redondo Beach, CA, received the call to enter the ministry while attending Good Shepherd Presbyterian, CA (new church development in the old Los Angeles Presbytery), and decided to attend Princeton Seminary because my home pastor and college chaplain both graduated from Princeton.

My wife, Joyce, and I met and were married while both seminary students (she received a MA in Christian Education from Princeton). We have three children and eleven grand children.

We have enjoyed each call in forty-three years of ordained ministry. God has called us to serve in large and small churches across America. Here's a brief account of the locations, starting from the current position:

Interim, First Presbyterian Church, Yuma, CO, 190 members, town, 2014 to current

Interim, Westminster Presbyterian Church, Peoria, IL, 245 members, small city, 2013 - 2014 Pastor, Westfield Presbyterian Church, New Castle, PA, 400 members, country, 2003-2012 Pastor, The Presbyterian Church, Pittsburg, KS, 450 members, college town, 1989-2003 Associate Pastor, First Presbyterian Church, Salinas, CA, 1,500 members, 1980-1989 Pastor, First Presbyterian Church, Marion, IN, 350 members, 1976-1980

Chaplain, Southwest State University, Marshall, MN, small college town, 1974-1976
Pastor, Ecumenical Parish, Deep River, IA, 350 members, small town, 1972-1974

I have also enjoyed serving in councils of our church. Currently in the Presbytery of Plains and Peaks, I am the Moderator of Committee on Ministry. We work with churches from the Nebraska Panhandle to the Colorado Plains to the Colorado Front Range just east of the Rockies. Our goals are simple: 1. Serve Christ; 2. Love the churches and their leaders; 3. Get organized to accomplish goals #1 and #2. This focus has helped us clarify our calling as COM liaisons with our theologically diverse churches.

I am grateful to the Lord Jesus Christ for the love and comfort we receive daily. The blessings from God are overwhelming and we are thankful. Recently in my daily devotions, I discovered the number of times the phrase "God's unfailing love" is used in the Psalms. A total of 45 times! God's love for the world never ends, and it is the source for our call to spread the Good News.

Appendix G

TERMS OF DISMISSAL

of **Bensalem Presbyterian Church** from the
Presbytery of Coastal Carolina, Presbyterian Church (USA)
To the Presbytery of the Mid-Atlantic of the Evangelical Presbyterian Church

Terms as Agreed to by the Session on January 10, 2016

1. The congregation now known as Bensalem Presbyterian Church will be dismissed, with its property, to another Reformed body – The Evangelical Presbyterian Church (EPC) –, if 75% plus one or more of the active members of the congregation present during a consultative meeting called by the Presbytery in accordance with G-3.0301a concur with the Session's request for such dismissal as a confirmation of the congregation's will.
2. In recognition of our mutual history as laborers in the Kingdom, and in recognition of the Presbytery's fiduciary responsibility to the Presbyterian Church (USA), the following financial terms shall be paid by the congregation now known as Bensalem Presbyterian Church to the Presbytery of Coastal Carolina on or before the effective date of dismissal:
 - a. \$ 23,100.00 – 7.00 NET acres of land valued at \$3,300 per acre. The per-acre price comes from the appraisal offered by Village Appraisers on August 5, 2015. The per-acre amount represents the appraised value of the land ONLY, and does not consider the value of improvements OR the church's cemetery, estimated at 2.25 acres plus an additional 0.75 acres for planned cemetery expansion.
 - b. \$ 0.00 – the total amount of unpaid per capita, not remitted by the congregation, but paid by the Presbytery from 2009 to 2015; **(This section is not applicable – Bensalem is up to date with per capita.**
 - c. \$ 50.00 – the office expense (postage, envelopes, and labels) incurred by Presbytery during the discernment process.
 - d. \$ 229.00 – the reimbursed travel expense (mileage) of the Presbytery Stated Clerk, Pastoral Team and Negotiating Team during the discernment process.

Items “a” through “d” – **\$23,379.00** – will be due on or before the effective date of dismissal. The money received for the land will be used only for New Church Development.

3. The congregation so dismissed will use the new name “**Bensalem Evangelical Presbyterian Church**” to reflect the congregation's new affiliation with a Reformed denomination that is not the PCUSA.
4. The congregation so dismissed will sever all associations with the PCUSA, such as Presbyterian Women, Presbyterian Men, etc.
5. The following obligations should be met within 45 days and must be completed within 180 days (unless extended by mutual agreement between the congregation and the presbytery) of the vote by the Presbytery of Coastal Carolina to concur with the congregation's request for dismissal to another Reformed denomination, the Evangelical Presbyterian Church (EPC).
 - a. Notification from the “receiving” Reformed denomination, the Evangelical Presbyterian Church (EPC) that the congregation now known as Bensalem Presbyterian Church will be received pending dismissal by the Presbytery of Coastal Carolina.

- b. The providing of original copies of all congregational records to the Presbytery of Coastal Carolina for transfer to the Presbyterian Historical Society. This includes, but is not limited to, minutes of the Session, minutes of any Boards of Deacons or Boards of Trustees, all membership rolls, and all registers. (G-3.0107). If it so desires, the departing congregation may make arrangements with the Presbyterian Historical Society to have copies made at the congregation's own expense.
 - c. Satisfactory evidence of the updating of all deeds, property and liability insurance policies, articles of incorporation, by-laws and any other legal documents which have previously included the Presbytery of Coastal Carolina and/or the Presbyterian Church (USA).
 - d. The church shall provide the Presbytery with satisfactory evidence that any loan(s) which the Presbytery guaranteed for the church has (have) been paid and satisfied.
 - e. Release by the Presbytery of any claim or interest in the congregation's property, including release of Presbytery from any obligation for congregation's loans with any non-Presbyterian Church (USA) entity. However, a clause *shall* be placed into the deed of transfer of any property which a dismissed congregation is allowed to take into its new Reformed body that provides that if the congregation ceases to be a member of that denomination (or its successor) within a period of five (5) years that the presently held property would revert to the Presbytery of Coastal Carolina (or its successor).
 - f. Mutual release of all claims that were or could have been made by the Presbytery against the congregation or by the congregation against the Presbytery. These documents will be drafted by the Presbytery of Coastal Carolina.
 - g. Close out and submittal of the congregation's financial and membership reports to the Presbytery.
 - h. Satisfactory evidence of communication with the Board of Pensions regarding cessation of payments at the time of dismissal as well as transfer of health insurance coverage for ministers and any staff enrolled in the Medical Benefits Plan of the PCUSA.
6. Within 30 days of the Presbytery's vote approving dismissal of the congregation or members thereof to another Reformed denomination, the Evangelical Presbyterian Church (EPC), the Presbytery will prepare a letter to members of the congregation informing them of their option to be dismissed with the congregation or to remain in the Presbyterian Church (USA). The congregation will mail the letter to all active members promptly and will bear all costs associated with this mailing. The letter will direct that responses are returned to the Presbytery of Coastal Carolina. The Presbytery will then ensure that contact is made with those members wishing to remain in the PCUSA and that they are assisted in joining a new congregation of their choice, if there is no continuing PCUSA congregation.
7. The congregation now known as Bensalem Presbyterian Church is encouraged to organize, and to invite representatives of the Presbytery to share in, a service of worship of Almighty God and thanksgiving for the witness and ministry of the departing congregation.

[End of Bensalem Document]

Appendix H

TERMS OF DISMISSAL

of Bethel Presbyterian Church (Raeford) from the
Presbytery of Coastal Carolina, Presbyterian Church (USA)
To the Presbytery of the Mid-Atlantic of the Evangelical Presbyterian Church

Terms as Agreed to by the Session on February 11, 2016

1. The congregation now known as Bethel Presbyterian Church will be dismissed, with its property, to another Reformed body—The Evangelical Presbyterian Church (EPC)—if 75% plus one or more of the active members of the congregation present during a consultative meeting called by the Presbytery in accordance with G-3.0301a concur with the Session's request for such dismissal as a confirmation of the congregation's will.
2. In recognition of our mutual history as laborers in the Kingdom, and in recognition of the Presbytery's fiduciary responsibility to the Presbyterian Church (USA), the following financial terms shall be paid by the congregation now known as Bethel Presbyterian Church to the Presbytery of Coastal Carolina on or before the effective date of dismissal:
 - a. **\$36,269.00** -- 4.81 NET acres of land valued as follows: 3.56 acres at \$8,264.00 per acre, said per-acre value per appraisal dated 1/16/2016 by James P. Plumber, Jr; PLUS 1.15 acres described in the appraisal as "low lying area" and valued in the appraisal at \$2,500; PLUS \$4,250, which represents the 50% ownership in the property on which is located the manse owned jointly by the Bethel and Shiloh congregations. The per-acre amount represents the appraised value of the land ONLY, exclusive of any improvements, and also EXCLUDES 1.63 acres designated as church cemetery.
 - b. **\$ 4,795.05** – the total amount of unpaid per capita, not remitted by the congregation, but paid by the Presbytery from 2003 to 2016. (This is the net amount: per capita overpaid in 2003 and 2004; underpaid in 2006 and 2010; paid in full in 2011; no payment for 2007, 2008, 2012, 2013, 2014, 2015, and 2016);
 - c. **\$ 78.40** – the office expense (postage, envelopes, and labels) incurred by Presbytery during the discernment process. (To be determined)
 - d. **\$ 198.89** – the reimbursed travel expense (mileage) of the Presbytery Stated Clerk, Pastoral Team and Negotiating Team during the discernment process.

Items "a" through "d" will be due on or before the effective date of dismissal. The money received for the land will be used only for New Church Development.

3. The congregation so dismissed will use the new name "*Bethel Presbyterian Church EPC*" to reflect the congregation's new affiliation with a Reformed denomination that is not the PCUSA. New signage and all communications (e.g. website, Facebook, brochures, newspaper information) must reflect the new name.
4. The congregation so dismissed will sever all associations with the PCUSA, such as Presbyterian Women, Presbyterian Men, etc.
5. The following obligations should be met within 45 days and must be completed within 180 days (unless extended by mutual agreement between the congregation and the presbytery) of the vote by the Presbytery of Coastal Carolina to concur with the congregation's request for dismissal to another Reformed denomination, the Evangelical Presbyterian Church (EPC).

- a. Notification from the “receiving” Reformed denomination, the Evangelical Presbyterian Church (EPC,) that the congregation now known as Bethel Presbyterian Church will be received pending dismissal by the Presbytery of Coastal Carolina.
 - b. In accord with the *Book of Order* G-3.0107, all session and congregational records shall be deposited with the Stated Clerk of the Presbytery of Coastal Carolina for transfer to the Presbyterian Historical Society. This includes, but is not limited to, minutes of the Session, Board of Deacons, Trustees, and the congregation, all membership rolls and registers, and any other ecclesiastical records of the congregation through the date of dismissal. In lieu of original documents, copies of the documents may be given to the Stated Clerk, who will transfer them to the Presbyterian Historical Society for permanent safekeeping.
 - c. Satisfactory evidence of the updating of all deeds, property and liability insurance policies, articles of incorporation, by-laws and any other legal documents which have previously included the Presbytery of Coastal Carolina and/or the Presbyterian Church (USA).
 - d. The church shall provide the Presbytery with satisfactory evidence that any loan(s) which the Presbytery guaranteed for the church has (have) been paid and satisfied.
 - e. Release by the Presbytery of any claim or interest in the congregation’s property, including release of Presbytery from any obligation for congregation’s loans with any non-Presbyterian Church (USA) entity.
 - f. Mutual release of all claims that were or could have been made by the Presbytery against the congregation or by the congregation against the Presbytery. These documents will be drafted by the Presbytery of Coastal Carolina.
 - g. Close out and submittal of the congregation’s financial and membership reports to the Presbytery.
 - h. Satisfactory evidence of communication with the Board of Pensions regarding cessation of payments at the time of dismissal as well as transfer of health insurance coverage for ministers and any staff enrolled in the Medical Benefits Plan of the PCUSA.
6. Within 30 days of the Presbytery’s vote approving dismissal of the congregation or members thereof to another Reformed denomination, the Evangelical Presbyterian Church (EPC), the Presbytery will prepare a letter to members of the congregation informing them of their option to be dismissed with the congregation or to remain in the Presbyterian Church (USA). The congregation will mail the letter to all active members promptly and will bear all costs associated with this mailing. The letter will direct that responses are returned to the Presbytery of Coastal Carolina. The Presbytery will then ensure that contact is made with those members wishing to remain in the PCUSA and that they are assisted in joining a new congregation of their choice, if there is no continuing PCUSA congregation.
 7. The congregation now known as Bethel Presbyterian Church is encouraged to organize, and to invite representatives of the Presbytery to share in, a service of worship of Almighty God and thanksgiving for the witness and ministry of the departing congregation.

[End of Bethel-Raeford Document]

Appendix I

TERMS OF DISMISSAL

of Pineland Presbyterian Church from the
Presbytery of Coastal Carolina, Presbyterian Church (USA)
To the Presbytery of the Mid-Atlantic of the Evangelical Presbyterian Church

Terms as Agreed to by the Session on February 2, 2016

1. The congregation now known as Pineland Presbyterian Church will be dismissed, with its property, to another Reformed body—The Evangelical Presbyterian Church (EPC)—if 75% plus one or more of the active members of the congregation present during a consultative meeting called by the Presbytery in accordance with G-3.0301a concur with the Session's request for such dismissal as a confirmation of the congregation's will.
2. In recognition of our mutual history as laborers in the Kingdom, and in recognition of the Presbytery's fiduciary responsibility to the Presbyterian Church (USA), the following financial terms shall be paid by the congregation now known as Pineland Presbyterian Church to the Presbytery of Coastal Carolina on or before the effective date of dismissal.
 - a. **\$20,765.00** (\$ 23,765.00: 6.79 net acres of land valued at \$3,500.00 per acre, less \$3,000.00 in recognition of previous financial support of New Church Developments. The per-acre price reflects the \$3,500 an acre value per appraisal dated 12/18/2015 by Realty Services of Eastern Carolina, Inc. The per-acre amount represents the appraised value of the land ONLY, exclusive of any improvements.)
 - b. \$ 0.00 – the total amount of unpaid per capita, not remitted by the congregation, but paid by the Presbytery from 2009 to 2015; (**This section is not applicable – Pineland is up to date with per capita.**)
 - c. \$ **142.84** – the office expense (postage, envelopes, and labels) incurred by Presbytery during the discernment process.
 - d. \$ **248.46** – the reimbursed travel expense (mileage) of the Presbytery Stated Clerk, Pastoral Team and Negotiating Team during the discernment process.

Items “a” through “d”—**\$21,156.30** – will be due on or before the effective date of dismissal. The money received for the land will be used only for New Church Development.

3. The congregation so dismissed will use the new name “***Pineland Church***” to reflect the congregation's new affiliation with a Reformed denomination that is not the PCUSA.
4. The congregation so dismissed will sever all associations with the PCUSA, such as Presbyterian Women, Presbyterian Men, etc.
5. The following obligations should be met within 45 days and must be completed within 180 days (unless extended by mutual agreement between the congregation and the presbytery) of the vote by the Presbytery of Coastal Carolina to concur with the congregation's request for dismissal to another Reformed denomination, the Evangelical Presbyterian Church (EPC).
 - a. Notification from the “receiving” Reformed denomination, the Evangelical Presbyterian Church (EPC,) that the congregation now known as Pineland Presbyterian Church will be received pending dismissal by the Presbytery of Coastal Carolina.
 - b. The providing of original copies of all congregational records to the Presbytery of Coastal Carolina for transfer to the Presbyterian Historical Society. This includes, but is not limited to, minutes of the Session, minutes of any Boards of Deacons or Boards of

Trustees, all membership rolls, and all registers. (G-3.0107). If it so desires, the departing congregation may make arrangements with the Presbyterian Historical Society to have copies made at the congregation's own expense.

- c. Satisfactory evidence of the updating of all deeds, property and liability insurance policies, articles of incorporation, by-laws and any other legal documents which have previously included the Presbytery of Coastal Carolina and/or the Presbyterian Church (USA).
 - d. The church shall provide the Presbytery with satisfactory evidence that any loan(s) which the Presbytery guaranteed for the church has (have) been paid and satisfied.
 - e. Release by the Presbytery of any claim or interest in the congregation's property, including release of Presbytery from any obligation for congregation's loans with any non-Presbyterian Church (USA) entity. However, a clause shall be placed into the deed of transfer of any property which a dismissed congregation is allowed to take into its new Reformed body that provides that if the congregation ceases to be a member of that denomination (or its successor) within a period of five (5) years that the presently held property would revert to the Presbytery of Coastal Carolina (or its successor).
 - f. Mutual release of all claims that were or could have been made by the Presbytery against the congregation or by the congregation against the Presbytery. These documents will be drafted by the Presbytery of Coastal Carolina.
 - g. Close out and submittal of the congregation's financial and membership reports to the Presbytery.
 - h. Satisfactory evidence of communication with the Board of Pensions regarding cessation of payments at the time of dismissal as well as transfer of health insurance coverage for ministers and any staff enrolled in the Medical Benefits Plan of the PCUSA.
6. Within 30 days of the Presbytery's vote approving dismissal of the congregation or members thereof to another Reformed denomination, the Evangelical Presbyterian Church (EPC), the Presbytery will prepare a letter to members of the congregation informing them of their option to be dismissed with the congregation or to remain in the Presbyterian Church (USA). The congregation will mail the letter to all active members promptly and will bear all costs associated with this mailing. The letter will direct that responses are returned to the Presbytery of Coastal Carolina. The Presbytery will then ensure that contact is made with those members wishing to remain in the PCUSA and that they are assisted in joining a new congregation of their choice, if there is no continuing PCUSA congregation.
 7. The congregation now known as Pineland Presbyterian Church is encouraged to organize, and to invite representatives of the Presbytery to share in, a service of worship of Almighty God and thanksgiving for the witness and ministry of the departing congregation.

[End of Pineland Document]



Central Community Gathering

Saturday, June 4th, 10:00am-2:00pm

Westminster Presbyterian Church
2505 Village Drive, Fayetteville, NC

*We are excited to gather together and do things differently!
You can look forward to lots of discussion time,
very little business, much laughter, quality interaction,
and unique worship.*

**For more information, please contact:

Rev. Sally Henry at sallyahenry@me.com, or Bonnie Barr carlbarr8@embarqmail.com

East Community Gathering

Saturday, June 11, 10:00 am—2:00 pm
Windemere Presbyterian Church
104 Windemere Road, Wilmington, NC 28405

The East Church Family gathers to celebrate our common calling and faith in Jesus Christ. Stroll through the Mission Fair. Enjoy "best ever" stories. Be inspired by energetic preaching, lively music, communion and live worship painting. Short business session.

*For more info, please contact East Mission Coordinator,
Rev. Nancy Gladden nancygladden@presbycc.org*

Together in the East Community



West Community Gathering

Reconnecting Creating Serving

*Let's Gather to celebrate Christ & Grow in Service!
It's not your Parents' Presbytery meeting!*

Saturday, June 11, at Brownson Memorial Presbyterian Church, Southern Pines
Contact Laura Lupton LauraLupton@presbycc.org
or 910-818-9938 or any member of the Launch Team

Presbytery of Coastal Carolina
Churches Members of Missional Communities

Central Community

Church	County	Church	County
Acme	Columbus	Holly Grove	Sampson
Amys Chapel	Robeson	Hope Mills	Cumberland
Ashpole	Robeson	Iona	Robeson
Beth Car	Bladen	Lake Waccamaw	Columbus
Bethany (Lumberton)	Robeson	MacPherson	Cumberland
Big Rockfish	Cumberland	Mars Hill	Cumberland
Black River	Sampson	McMillan	Cumberland
Bluff	Cumberland	Midway	Robeson
Central	Bladen	Mount Horeb	Bladen
Centre	Robeson	Mount Olive	Robeson
Chadbourn	Columbus	Mount Pelier	Robeson
Church of the Covenant	Cumberland	Palestine	Cumberland
Clarkton	Bladen	Panthersford	Robeson
College Heights	Cumberland	Parkton	Robeson
Dothan	Robeson	Peace	Cumberland
Elizabethtown	Bladen	Philadelphus	Robeson
Elizabethtown Second	Bladen	Red Springs	Robeson
Faison Memorial	Sampson	Reilly Road	Cumberland
First (Fairmont)	Robeson	Rex	Robeson
First (Fayetteville)	Cumberland	Rowland	Robeson
First (Lumberton)	Robeson	Sardis	Cumberland
First (Maxton)	Robeson	Sherwood	Cumberland
First (Spring Lake)	Cumberland	Southview	Cumberland
First (Whiteville)	Columbus	St. Pauls	Robeson
Galatia	Cumberland	Sunnyside	Cumberland
Godwin	Cumberland	Vaughn Memorial	Cumberland
Graves Memorial	Sampson	Village	Cumberland
Harmony	Sampson	Westminster (Fayetteville)	Cumberland
Haymount	Cumberland	Westminster (Whiteville)	Columbus
Highland	Cumberland	White Plains	Bladen
Highland	Cumberland	Wilson Chapel	Robeson

Presbytery of Coastal Carolina
Churches Members of Missional Communities

East Community

Church	County	Church	County
Antioch (Jacksonville)	Onslow	New Hope	Brunswick
Bethany (Wilmington)	New Hanover	Oak Grove	New Hanover
Bethel (Beulaville)	Duplin	Oak Plain	Sampson
Beulaville	Duplin	Pearsall Memorial	New Hanover
Bowden Community	Duplin	Pike-Rocky Point	Pender
Bridge	Brunswick	Pineland	Onslow
Burgaw	Pender	Pink Hill	Lenoir
Calypso	Duplin	Pleasant View (Albertson)	Duplin
Cape Carteret	Carteret	Pollocksville	Jones
Cape Fear (Wilmington)	New Hanover	Potts Memorial	Pender
Carolina Beach	New Hanover	Rios de Agua Viva	Wayne
Caswell	Pender	Rockfish	Duplin
Chestnut Street	New Hanover	Shallotte	Brunswick
Chinquapin	Duplin	Smith	Lenoir
Croatan	Craven	Sneads Ferry	Onslow
Faison	Duplin	Southport	Brunswick
First (Jacksonville)	Onslow	St. Andrews-Covenant	New Hanover
First (Morehead City)	Carteret	Stanford	Duplin
First (Morehead City)	Carteret	Teachey	Duplin
First (Wilmington)	New Hanover	Topsail	Pender
Grace	Carteret	Topsail	Pender
Grove Kenansville	Duplin	Trinity (Havelock)	Craven
Hallsville	Duplin	Wallace	Duplin
Harper Southerland	Lenoir	Warsaw	Duplin
Hopewell	Pender	Westminster (Wilmington)	New Hanover
Fuente de Agua Viva	Duplin	Wildwood	Carteret
Little Chapel on Boardwalk	New Hanover	Windermere	New Hanover
Maple Hill	Pender	Winter Park	New Hanover
McClure Memorial	New Hanover	Woodburn	Brunswick
Mount Zion	Duplin		

Presbytery of Coastal Carolina
Churches Members of Missional Communities

West Community

Church	County	Church	County
Antioch (Red Springs)	Hoke	Laurinburg	Scotland
Barbecue	Harnett	Leaflet	Harnett
Bensalem	Moore	Lillington	Harnett
Bethel (Raeford)	Hoke	Lumber Bridge	Robeson
Bethesda	Moore	Manly	Moore
Biscoe	Montgomery	McDonalds Chapel	Moore
Blandonia	Lee	Montpelier	Scotland
Broadway	Lee	Morningside	Lee
Brownson Memorial	Moore	Mount Pisgah	Harnett
Buffalo	Lee	Olivia	Harnett
Bunnlevel	Harnett	Philippi	Hoke
Cameron	Moore	Pleasant View (Laurinburg)	Scotland
Cameron Hill	Harnett	Pocket	Lee
Cape Fear (Lillington)	Harnett	Priest Hill	Moore
Church in the Pines	Scotland	Providence	Moore
Community	Moore	Raeford	Hoke
Culdee	Moore	Raven Rock	Harnett
Cypress	Harnett	Salem (Sanford)	Lee
Ebenezer	Harnett	Shiloh	Hoke
Edgewood	Lee	Silver Hill	Richmond
Elise	Moore	Spout Springs	Cumberland
Ephesus	Harnett	St. Andrews	Lee
Erwin	Harnett	Summerville	Harnett
Euphronia	Lee	Trinity (Laurinburg)	Scotland
Eureka	Moore	Union	Moore
Faith	Scotland	Vass	Moore
First (Carthage)	Moore	Wayside	Lee
First (Dunn)	Harnett	West End	Moore
First (Lillington)	Harnett	Westminster (Laurinburg)	Scotland
First (Sanford)	Lee	White Hill	Lee
Flat Branch	Harnett	Williams Chapel	Lee
Freedom East	Hoke		
Grove Dunn	Harnett		
Horseshoe	Moore		
Ingram Branch	Moore		
Jackson Springs	Moore		
John Hall	Moore		
Jonesboro	Lee		
Lakeview	Moore		
Laurel Hill	Scotland		

Presbytery of Coastal Carolina
Minister Members of Missional Communities

Central Community

Albright, Fred P. (HR)	McCoy III, James Benjamin (HR)
Baker, Michael (P)	McDuffie, Rick (P)
Belle, James (P)	Medford, Debbie H. (MAL)
Bennett, Johnie (HR)	Miller Jr., Gene D. (HR)
Bowerman, David (MAL)	Miller, Robert D. (HR)
Bowerman, Lucy S. (MAL)	Moore Sr., Edward Leonidas (HR)
Bremer, Randal L. (MAL)	Moore, Richard Gary (HR)
Briggs, Bebe (CRE)	Moran, James (P)
Bryan, John L. (P)	Neil, Frank A. (HR)
Burleson, Thomas (P)	Orders, J. William (HR)
Bush, David A. (HR)	Page, Clarence (P)
Carlisle, Christopher (HR)	Peebles, Mills J. (HR)
Chandler, Gray V. (MAL)	Pitchford, Bertrand C. (HR)
Childress, Melvin O. (HR)	Pollock, Robert E. (HR)
Coker Jr., John W. (MAL)	Price, Robert (CRE)
Currie, Marion H. (HR)	Randall Jr., James W. (P)
Denny, Chris F. (P)	Randall Jr., Rogers E. (P)
DePriter, Richard L. (HR)	Raynor, Becky (CRE)
Ensley, Eugene C. (HR)	Reinhold, William T. (MAL)
Garrett, Michael (P)	Roberts, Earle D. (HR)
Gettys, William M. (HR)	Ruth, David (P)
Goodman, John R. (HR)	Ruth, Eva (MAL)
Gordon, Edmund W. (HR)	SalmonCampbell, Joan (P)
Grammer, Allen K (P)	Stealing, Kenneth P. (P)
Gray, Robert W. (HR)	Thomas, C. C. (HR)
Harrison, J. Evan (P)	Thompson, Beverly (P)
Henry, Sally (P)	Thompson, George (P)
Holmes, Ronald (CRE)	Vaughan, Earl M. (HR)
Hudson, Susan M. (P)	Waldron, Annelle (CRE)
Johnson, J. Ernest (HR)	Walker Jr., Arnold G. (HR)
Johnson, William E. (HR)	West, Benjamin S. (HR)
Jordan, Doug (CRE)	White, Shuford S. (HR)
Layton, Paul Austin (HR)	Wilson, Hazel A. (P)
Link, Steuart T. (P)	Woodall Jr., Paul D. (HR)

Presbytery of Coastal Carolina
Minister Members of Missional Communities

East Community

Adams, Collin B. (P)	Ferrante, Nick (CRE)	Murrell, N. Samuel (MAL)
Albertson, Garrett E. (HR)	Fitzgerald, Steven Earl (P)	Nielsen, Nicholas (P)
Andrews Jr., Louie V. (HR)	Fletcher, Patricia M. (MAL)	Norman, Daniel E. (HR)
Atkinson, John (Jay) Alvin (P)	Fontana, Joseph J. (HR)	Oliver, Preston C. (HR)
Augustus, David L. (P)	Francis, Barbara T. (MAL)	Oltman, Robert B. (HR)
Bacot, John S. (HR)	Fry, Robert E. (CRE)	Page, W. Murray (HR)
Bankhead, Robert C. (HR)	Gamble Jr., Claude D. (HR)	Parato, LaVera Monroe (P)
Bardeen, Bob (P)	Gladden, Nancy J. (MAL)	Pate, Herbert (CRE)
Bartlett, James D. (CRE)	Gladden, Philip K. (P)	Pflug, John (P)
Bayley, Robert G. (MAL)	Goodnight Jr., William C. (HR)	Phillips, Robbie (P)
Beach, Kathy (P)	Harley, P. Emile (P)	Pickett, Johnny (CRE)
Bellomy, Hank (P)	Hartsell, Vaughn Earl (HR)	Rabun, Patrick Thomas (P)
Berry, Bruce Lee (HR)	Havlicek, Timothy J. (P)	Rogers, Shirley (MAL)
Bland Jr., William H. (MAL)	Haywood, Robert W. (HR)	Sanderford, J. Lewis (HR)
Boyd, Richard C. (HR)	Hein, Steven Earl (HR)	Scott, Randa (CRE)
Brewton, Roy (HR)	Henderson, Matthew (P)	Siebbeles, Philip (P)
Brickhouse, D. Lyle (MAL)	Highfill, June Hicks (HR)	Simpson, Suzanne S. (HR)
Brinson, Ann (HR)	Highfill, Madison M. (HR)	Skinner, Donald L. (HR)
Bron, Jerry D. (HR)	Houston, Mark (CRE)	Slomanski, Pat (HR)
Brown, William P. (HR)	Howell, Gary E. (HR)	Smiley, Charles A. (CRE)
Burrows, W. Benjamin (P)	Jahnes, Ann B. (P)	Stephens III, William F. (HR)
Campbell, Donald G. (HR)	Jean, Kevin (MAL)	Taber, J. William (HR)
Carriker II, James E. (HR)	Jenkins, David B. (HR)	Taber, Pamela L. (HR)
Carriker, C. Owen (MAL)	Johns, Jim (P)	Taylor, Lillian M. (HR)
Causey, John N. (P)	Jones, William R. (HR)	Townsend, Edwin G. (HR)
Childs Jr., Robert R. (HR)	Kelley, Jonathan R. (MAL)	Tucker, David (HR)
Cone, Marie (P)	Kerr, John R. (MAL)	Vanderbilt, David (P)
Connette, Edward G. (HR)	Kerr, Leslie (CRE)	Vaughan, Hannah H. (HR)
Cooper, Nancy L. (MAL)	Lapp, Robert H. (P)	Walker, Joseph W. (HR)
Croft, Timothy L. (HR)	Lee Jr., Charles D. (P)	Walters Jr., Carl F. (HR)
Cushing, Doug (P)	Lee, Robert R. (HR)	Ward, Michael Lee (HR)
Davis, Eugene B. (HR)	Link, Robert S. (HR)	Ward, P. Joseph (P)
Davis, Kathleen (HR)	Love, Charles R. (HR)	Watson, Jonathan C. (P)
Davis, Terry (HR)	Manning, Harold (HR)	Wayne Jr., Jim (CRE)
Davis, Willis Milton (P)	McCann, Jerry C. (HR)	Wells, Susan (CRE)
Dinkins, Walter M. (MAL)	McDonald, David D. (MAL)	White Jr., James W. (HR)
Doles, Brian C. (P)	McInnis, David F. (HR)	Winkler, Patrick H. (HR)
Doll, Aaron (P)	McKnight, Mary C. (HR)	Womack Jr., Francis M. (HR)
Edgerton, Glenn S. (HR)	McKnight, Thomas (HR)	Wurtzel, Richard (CRE)
Elliott, Charles D. (HR)	Mendenhall, Raymond W. (HR)	Young, Jake (P)
Evans, Ralph M. (HR)	Moore, Lardner C. (HR)	Young, William G. (P)
Fauntleroy, Whitney (P)	Moreno, Eduardo A. (P)	

Presbytery of Coastal Carolina
Minister Members of Missional Communities
West Community

Alexander, William M. (HR)	Hage, John Christian (P)	Phifer, Homer C. (HR)
Allen, Karen C. (P)	Hallead, Glen J. (P)	Poole, Scott (HR)
Allen, Robert R. (HR)	Hammersley, Jason (P)	Read, Sanders G. (HR)
Aragon, Miguel A. (P)	Hayes, William C. (P)	Reagan, John M. (HR)
Armistead, Michael W. (P)	Hedin, Barbara Ann (P)	Reason, T. Austin (P)
Bain, Shirley T. (CRE)	Herring, Billy H. (HR)	Rodda, Richard D. (HR)
Batten, Glenn T. (MAL)	Herring, H. Dewey (HR)	Ropp, John C. (HR)
Battles, Robert W. (HR)	Hinson-Hasty, G. Lee (MAL)	Russell, Holly D. (HR)
Bobo, Christopher J. (HR)	Hix, Douglas W. (HR)	Sherrod, David B. (P)
Bock, Warren L. (HR)	Horne, Roger E. (HR)	Shields, Paul J. (MAL)
Boyce III, Edward Laurence (P)	Houston, B. Douglas (P)	Simmons, Roger (CRE)
Bradham, Robert D. (HR)	Hudson, David L. (P)	Spence, Thomas Kendall (HR)
Brearley, Ladson M. (HR)	Kahnt, Rebecca (P)	Stoker, Dawn Russell (P)
Bright, Ralph G. (HR)	Lax, Bruce (P)	Stoker, Ronald (P)
Brown, Thomas D. (CRE)	Lee, JoAnne M. (HR)	Stone, Harold M. (HR)
Bumgardner, James H. (HR)	Locklear, Helen (MAL)	Stone, Roderick D. (P)
Carmical, Marian Jean (P)	Love, Jane (P)	Strickland, Cynthia J. (MAL)
Carmichael, Henrietta J. (HR)	Lupton, Laura (MAL)	Taylor, Catherine (MAL)
Carter Jr., E. Neal (P)	Lynde, Kenneth J. (HR)	Taylor, Samuel Johnson (P)
Carver, Mark A. (P)	Lyon, Larry (MAL)	Urie, Robert M. (HR)
Coffey Jr., David G. (HR)	Marshall, Thomas E. (HR)	Verhey, Tim (MAL)
Crawford, W. Dudley (HR)	Martindale, Richard T. (P)	Walton, George M. (HR)
Crossley, Ronald C. (HR)	McCall, Lyndsay M. (MAL)	Washburn, Joseph (P)
Dendy, Robert S. (HR)	McGee, Wendell (CRE)	Weaver, Michael S. (P)
Dudley, David M. (P)	McGehee, Michael L. (HR)	Wentz, Charles (CRE)
Dudley, Kathryn (P)	McLean, Rufus (P)	Whitehouse, Robert B. (P)
Ellis, Larry Hoyt (HR)	Miller, Keith A. (HR)	Whitehurst, Howard H. (HR)
Ewing, James D. (P)	Monroe, Charles (CRE)	Wilkinson, Whitney (P)
Fisher, Mark (MAL)	Morgan, James L. (MAL)	Williams, Alexander B. (HR)
Forester, Elizabeth G. (HR)	Neuhs, Jon O. (P)	Williams, Thomas T. (HR)
Freeman, Cynthia (MAL)	Olney, Willard W. (HR)	Williams, Tyler A. (P)
Ganzel, Jean Yvonne (HR)	Parker, Billy L. (HR)	Wilson-Hooker, Mamie L. (HR)
Giles, J. William (HR)	Patton, Brown Butler (P)	Wiser, A. Clark (HR)
Graybeal, Dawes B. (HR)	Pauley, William E. (HR)	Young, Herbert (HR)
Guess, J. Decherd (P)	Perryman, Grady J. (HR)	

Seek *peace* and pursue it. Proverbs 34:14

The Mozell Howie ***2016 Peacemaking Scholarship*** for High School Seniors

*The Peacemaking Subcommittee of Coastal Carolina Presbytery
will offer two \$1,000 scholarships to high school seniors
enrolling in college by the fall of 2016.*

Rules for Scholarship Consideration:

1. The student must be a senior in high school.
2. The student must be a member of a Presbyterian Church in Coastal Carolina Presbytery.
3. The student is asked to submit an essay in response to the following question:
How have you participated in God's work of peacemaking in the past and what is your vision for participating in peacemaking in the future?
4. Essay must be typed, properly referenced, not exceed 1,000 words and include the student's name, contact information, home church, and college they are attending.
5. All essays must be received by **May 15**. **Email submission is preferred.**
6. The winners will be notified and then presented with their award at a June regional presbytery meeting.

Essays may be submitted to:

**Rev. Whitney Wilkinson
Cameron Presbyterian Church
P.O. Box 68
Cameron, NC 28326**

or

revwhitney@cameronpresbyterian.org

Questions? Contact Whitney Wilkinson by email or at (910) 245-7901.

PRESBYTERIAN YOUTH

Triennium

July 19 – 23, 2016

Purdue University, West Lafayette, IN

www.presbyterianyouthtriennium.org

Every three years the Presbyterian Church (USA) partners with the Cumberland Presbyterian Church to put together an event for their high school aged youth. This event is called Triennium and is held at Purdue University, West Lafayette, IN, and there are normally around 6,000 people in attendance. Registration for this event is done mainly through the presbyteries and is limited to a certain number of spaces.

Our first deadline has passed, but we still have spots available! Some information to help you determine if any of your young people are interested and/or eligible to attend:

When: July 19-23, 2016 (We may be traveling late on the 18th and returning on the 24th)

Cost: \$640.00, which includes registration fee, room, board, and transportation. Churches are encouraged to help delegates with expenses.

Churches are encouraged to choose applicants based on these criteria:

- Will the delegate be 15 years old or no more than 18 years old on July 18, 2016?

- Has the delegate attended Triennium in the past?

- Will the delegate be able to attend in 2019?

- How many delegates have applied from a single church?

(Churches are limited to 5 youth per church until the first deadline.

If there are spaces remaining at that point, churches may add participants.)

Important Dates: 1st Registration Deadline- February 10, 2016 (\$200.00 Due)

2nd Deadline- March 15, 2016 (Additional \$200.00 Due)

3rd Deadline- April 30, 2016 (Final \$240.00 Due)

Please have applicants fill out the attached forms and send them to:

Presbytery of Coastal Carolina c/o Amy Hodges

807 West King Street

Elizabethtown, NC 28337

Along with a \$200.00 Deposit. They will be confirmed for the trip once we receive their paperwork and deposit. If you have any questions, please do not hesitate to contact me, Amy Hodges 910-520-7934 or presbyccyouth@gmail.com





MARCH 19, 2016

MONROE PIG PICKIN'

Come re-discover Monroe!

Our Board of Directors and Staff invite you to breathe in the beauty of Monroe Camp & Retreat Center, learn about plans for 2016, and see how Monroe is evolving to meet the needs of today's campers! Everyone is invited!

Optional Please RSVP to the office by March 15, 2016



Saturday, March 19, 2016

3:00 – 7:00 PM

Dinner & Keynote 5:30-7:00

Rediscover the
Heart of Monroe!

Alumni & Friends
Gathering!

Envision
Monroe's Future!

Keynote by
Richard Dubose of
Montreat!

Share your
Wisdom!

Dinner & Appeal

MONROE CAMP &
RETREAT CENTER
24501 Camp Rd
Laurel Hill, NC 28351
910-276-1654

www.MonroeCamp.org
Office@MonroeCamp.org

Galatia Presbyterian Church

The Session at Galatia Presbyterian Church would like to invite you to join us for a very special dedication service. We have been blessed with a new organ crafted by the Phoenix Organ Company, and we plan to dedicate it on March 6, 2016, at 3:00 p.m. in our Sanctuary.

The service will include a brief dedication, followed by a recital that will showcase the organ's capabilities. Mr. Don Anderson, the owner of the Phoenix Organ Company, has graciously offered to play for us. Mr. Anderson is an accomplished musician and craftsman, and we are excited to have him join us on this special day.

We will also have light refreshments in our Fellowship Hall following the recital. We hope that you will be able to join us as we give thanks to God for His continued blessings and enjoy an afternoon of music and fellowship.

Don't miss... *UNION ON THE MOVE!*



Presbytery Partners with Union Presbyterian Seminary for

Presbytery's E³ LEARNING FAIR

Saturday, September 17, 2016

Keynote by Dr. Brian Blount, President UPS

Workshops by seminary professors & administration

- John Carroll – New Testament
- Sam Adams – Old Testament
- Stan Hargrove – Theology
- Carson Rhyne – Polity
- Ken McFayden – Dean
- Richard Wong – Stewardship
- Katie Cannon – Theology and Ethics